



**STRATEGIES FOR NORTHERN DEVELOPMENT (SND) – KENYA**  
**REQUEST FOR TENDER FOR CONSTRUCTION OF CENTRE OF EXCELLENCE**  
**FOR MOITE BMU**

HARRY THUKU LANE, OFF MARSABIT GENERAL HOSPITAL ROAD,  
BEHIND CATHOLIC CHURCH-MARSABIT  
OFF WILDLIFE ROAD, ADJACENT TO KENYA NATIONAL LIBRARY.

**Tel: [+254] 741845578**

**E-mail: [info@sndafrica.org](mailto:info@sndafrica.org)**

**Website: [www.sndafrica.org](http://www.sndafrica.org)**

**REF: [SND -WFP/ LTP- COE MOITE BMU/2026- 01](#)**

***Closing Date: 27 May 2026***



## **REQUEST FOR QUOTATION**

### **RE: CONSTRUCTION OF CENTRE OF EXCELLENCE FOR MOITE BMU**

The Strategies for Northern Development (SND), is a local non-governmental organization working with nomadic pastoralist communities in Northern Kenya and Southern Ethiopia. SND was registered in Kenya with the NGO Coordination Board as a fully-fledged NGO on 6th December 2007.

SND is driven by a vision to see a society where all pastoralist communities are resilient and live a dignified life and a mission to empower and transform pastoralist communities to be self-resilient in life.

Key thematic areas of focus are;

- i. Peace, Conflict Resolution and Governance
- ii. Humanitarian Assistance and Emergency Response
- iii. Protection, Gender Equality and Inclusion
- iv. Climate Justice and Resilience
- v. Livelihood and Enterprise Development
- vi. Water, Sanitation, and Hygiene (WASH).
- vii. Institutional Effectiveness

SND in collaboration with the County Government of Marsabit through funding from WFP intend to **support Construction of MOITE BMU in Loyangalani Ward, Laisamis Sub County Marsabit County.**

For this purpose, we invite bidders to submit quotations for the execution and completion of the above assignment, as outlined in the quotation document.

**NB:** Prices quoted should be **exclusive of VAT**. The successful vendor(s) will be issued with a VAT Exemption Certificate for this assignment.

**DESCRIPTION OF WORK/SERVICE**  
**CONSTRUCTION OF CENTRE OF EXCELLENCE FOR MOITE BMU**

<b>PRELIMINARIES &amp; GENERAL WORK</b>					
<b>Item</b>	<b>Description</b>	<b>Unit</b>	<b>Qty</b>	<b>Rate</b>	<b>Amount</b>
	Allow for mobilization and demobilisation of machinery, equipment, personel, provision of security, personal protective equipment and setting up of contractor's base camp	sum	1		-
	Allow for transportation of construction materials	sum	1		-
	Allow for insurance of works, machinery/equipment, staff and materials	sum	1		-
	Provide, fix and maintain project sign board per drawing (including any payments to local authorities) through to end of defects liability period of contract	sum	1		-
	Provisional Sum for fees requested by various authorities and agencies including NEMA, WARMA & County Governments	sum	1		-
	Allow a fixed sum of 150000 KES for county supervision	sum	1	150,000.00	150,000.00
	Allow a 15% adjustment to the county supervision sum	%	15		-
	<b>Total</b>				

DRY FISH STORE					
Item	Description	Unit	Qty	Rate	Amount
	<b><u>Foundation</u></b>				
	<b><u>Excavation</u></b> <i>(Rates to include disposal of excavation spoil, shoring, dewatering, levelling)</i>				
	Excavation over site to depths N.e 0.15	m <sup>2</sup>	150		
	Excavation for strip to depths N.e 1 m	m <sup>3</sup>	24		
-	<b><u>Reinforced concrete Class 20 in:</u></b> <i>Rates to include casting in situ &amp; placement</i>	-	-	-	-
	200mm thick strip Foundation (1:2:4)	m <sup>3</sup>	6		
	BRC A142 with 150mm laps	m <sup>2</sup>	30		
	<b><u>Foundation walling</u></b>				
	200mm Thick masonry wall to the foundation with hoop iron at every alternative course c/s ratio 1:3 and 16mm Joints	m <sup>2</sup>	40		
	<b><u>Hardcore and murrum</u></b>				
	300mm Handpacked Hardcore filling in making levels not exceeding layers of 150mm maximum thickness	m <sup>3</sup>	45		
	DPM 1000 gauge	m <sup>2</sup>	150		
	BRC mesh A 142	m <sup>2</sup>	150		
	200 mm thick C20 concrete slab	m <sup>3</sup>	30		
	<b><u>Super structure</u></b>				
	<b><u>Masonry Walling</u></b> <i>(Dressed masonry walling in cement and sand (1:3) mortar reinforced with and including 25 x 3mm thick hoop iron in every alternate course.)</i>				
	200mm Masonry walling	m <sup>2</sup>	29		
	Gauge 28 IT5 Prepainted Box profile for walling	m <sup>2</sup>	155		
	<b><u>Foundation Subcolumns</u></b>				

<b>Form Work</b> <i>(Provide and fix shuttering including propping, strutting and striking all as specified)</i>				
sawn form work smooth finish to:				
300mm x 300mm Sub columns	m <sup>2</sup>	39		
<b>Reinforcement</b> <i>(Rates to include cutting, bending, laps allowance and placing on site)</i>				
D12 (0.89kg/m)	kgs	305		
D8 (0.395kg/m)	kgs	85		
M16 x 150mm threaded foundation Bolts, nuts, and washers	nr	76		
250mm x 250mm x 10mm Foundation base plates	nr	19		
<b>Concrete</b> <i>(Vibrated reinforced concrete class 20 (1:2:4) with 20mm maximum aggregate as described in)</i>				
19 No. 300mm x 300mm sub columns	m <sup>3</sup>	6		
<b>Square Hollow Sections</b> <i>Supply, fabricate, install with jointed bolts including all necessary cutting, drilling of holes, hoisting, fixing in position, and making connections with high-strength bolts, nuts, and washers as per approved detailed drawings and engineer's instructions. This item also includes the application of one coat of approved steel primer and three coats of super gloss paint on new work, complete as specified"</i>				
75mm x 75mm x 3mm SHS 3 meter high prepainted SHS stanchions welded on baseplates (6.87(kg/m)	kgs	372		
75mm x 50mm x 2mm RHS for ( joists, sills, wallplates, siderails, topplates, and headers) (3.86kg/mtr)	kgs			

	<b>Roofing</b>				
	Allow for supply fabrication and installation of roofing trusses with 50mm x 25mm x 3mm RHS Rafters ,50mm x 25mm x 3mm RHS struts and webs as detailed ( <i>Rates to include bolting and joinery works using 8mm plates, bolts, nuts and washers</i> )	nr			
	50mm x 25mm x 3mm prepainted Purlins at 1500mm C-C spacing (3.39kg/mtr)	kgs	550		
	<b>Subtotal 1</b>				=
	<b>Cladding</b>				
	Gauge 28 IT5 box profile	m <sup>2</sup>	205		
	Gauge 28 ridge cap	mtrs	17		
	200mm x 25mm prepainted Fascia board	mtrs	58		
	150mm PVC gutters <i>Heavy duty UPVC rainwater gutters &amp; down pipes and fittings : solvent welded and jointing in approved adhesive built into concrete or fixed with approved holder brackets: to approval(provisional)</i>	mtrs	33		
	<b>Finishes</b>				
	<b>Floor Finishes</b> cement sand screed as described in:				
	30mm thick screed with a steel finish finished smooth with red oxide	m <sup>2</sup>	150		
	<b>Wall Finishes</b>				
	25mm thick plaster trowelled to smooth finish to external and internal walls	m <sup>2</sup>	51		
	<b>Paint works</b> <i>Prepare and apply three coats all weather emulsion paint to:</i>				
	Plastered walls	m <sup>2</sup>	51		
	<b>Doors &amp; Windows</b>				

<p><b>Windows</b> <i>Supply and Fix the following purpose made steel casement windows manufactured from heavy duty standad sections primed with three coats of super gloss paint and fixing to SHS head and side jambs complete with closing mechanism and other fittings.</i></p>				
<p>Window size 1600 x 2000 mm windows with 4mm glazing and buglar proof</p>	nr	8		
<p>Window size 1200 x 1600 mm windows with 4mm glazing and buglar proof</p>	nr	1		
<p><b>Doors</b> <i>Standard section purpose made heavy duty steel casement doors in modular panes complete with frame, sub-frame, mullions, transomes, glazing bars, burglar proofing bars horizontally and vertically in all openable panes, all necessary pegs, polished brass handles and stays, pin type heavy duty hinges, mosquito proofed hooded permanent vent, fixing lugs cast on, three coats od super gloss paint before fixing in position and pointing with approved mastic sealant all round frame</i></p>				
<p>multi leaf Door size 4000 x 2400mm with 1.2mm thick panel face and 4mm glazing</p>	nr	1		
<p>single leaf Door size 900 x 2400mm with 1.2mm thick panel face and 4mm glazing</p>	nr	1		
<p>Double leaf Door size 1500 x 2400mm with 1.2mm thick panel face and 4mm glazing</p>	nr	1		
<p><b>Builders works related to services installations</b></p>				
<p>Provide for all the necessary builders works in connection with all the electrical services installation works (cabling, wiring, lighting, sockets, Trunking, pattresses, Distribution boards and fittings)</p>	Sum	1		

	<b>Tank and Fittings (Rates to include supply, placement and installation accessories)</b>				
	10m <sup>3</sup> plastic tank (Short tank) Tank should include a DN 15mm drawoff tap, OD 50mm Overflow provision. walls should be corrugated, One-piece moulding with no joints,leak-proof and should be able to withstand long exposure to sunlight. preferably Kentank/Rototank	nr	2		
	Construction of a 400mm high (agl) x 3000mm wide Masonry base with 200mm thick BRC reinforced C20 concrete 1:2:4 slab on 300mm thick hand compacted hardcore, with walls plastered and top slab finished with a 25mm cement sand screed motor, trowelled smooth	sum	2		
	<b>Subtotal 2</b>				- =====
	<b>Collection page</b>				-
	<b>Sub Total 1 Brought Forward</b>				- =====
	<b>Sub Total 2 Brought Forward</b>				- =====
	<b>Grand Total</b>				- =====

**LANDING BAY**

<b>Item</b>	<b>Description</b>	<b>Unit</b>	<b>Qty</b>	<b>Rate</b>	<b>Amount</b>
	<b>Earthworks</b>				
	<b>Excavations for Cuttings</b> <i>(Rates to include cutting, shoring, trimming, dewatering and disposal of excavated spoils approved materials shall be used for backfill and unsuitable materials disposed to tip as specified)</i>				
	Top soil, maximum depths n.e 0.25 meters	m <sup>3</sup>	50		
	materials other than topsoil, rock, or artificial hard material				
	Depth: 0.5-1 meter	m <sup>3</sup>	10		
	Rock material Depth: 0.5-1 meter	m <sup>3</sup>	10		
	<b>Gabion installation</b> <i>Rates to include supply, assembly, placing, filling.</i> <i>Gabions must be filled carefully to maintain alignment, avoid bulging, and ensure a dense, stable mass. and securing the cages</i>				
	Provide, assemble, place 2m x 1m x 1m Double-twisted hexagonal mesh (woven) zinc-coated galvanized gabion boxes of mesh size 100 x 80mm and wire diameter 3mm including binding, aligning and stretching, as specified	nr	50		
	Provide, assemble and place Double-twisted hexagonal mesh of 60mm x 80mm Reno mattresses, size 2m(L) x 1m(W) x 0.3m(H), Class A galvanized with wire diameter 4mm placed on a prepared surface along the Lake shore	m <sup>2</sup>	200		
	provide and place rock fill to Gabions and Gabion mattresses	m <sup>3</sup>	200		
	Supply and lay non-woven needle-punched geotextile filter fabric (minimum weight 200-270g/m <sup>2</sup> ) to the rear and underside of the gabion structure with minimum overlaps of 500mm at joints, inclusive of all waste, cutting, and securing in position as instructed	m <sup>2</sup>	200		

	1 1/2" GI Class B anchored along the Gabion wall length at 3 meter spacing for boat mooring	m	50		
	<b>Filling</b> <i>Rates to include importation, selection and compaction of appropriate backfilling materials</i>				
	Selected fill to Gabion wall Foundations and wall surfaces	m <sup>3</sup>	30		
	imported fill for the formation of a 25-meter-long x 10meter wide x 1 meter high pier, compacted in layers	m <sup>3</sup>	250		
	Allow provisional sum for trench dewatering during excavations	Sum	1		
	<b>Total</b>				

CONSTRUCTION OF A TWIN LATRINE					
S/No	Description	U.O.M	Qty	Rate	Amount
	<b>Foundation works</b> <i>(Quantities provided are provisional)</i>				
	<b>Excavation</b> <i>Rates to include spoil Disposal, maintaining and supporting sides and keeping free from water, mud and fallen materials by bailing, pumping or otherwise</i>				
	Excavation to depth n.e 1 Mtrs	m <sup>3</sup>	4		-
	<b>Concrete works</b> <i>Vibrated reinforced concrete class 20 (1:2:4) with 20mm maximum aggregate as described in:</i>				
	Strip Foundation	m <sup>3</sup>	1		-
	<b>Reinforcement</b> <i>(Rates to include cutting, bending, laps allowance and placing on site)</i>				
	D8 reinforcement bars (weighing 0.395kg/m) (measured net-no allowance made for laps)	Kgs	15		-
	<b>Masonry Walling</b> <i>(Foundation quarry stone walling in cement and sand (1:2) mortar reinforced with and including 25 x 3mm thick hoop iron in every alternate course.)</i>				
	200mm for strip foundation	m <sup>2</sup>	9		-
	<b>Floor Slab</b>				
	<b>Water proofing</b>				
	Single layer of 100 gauge polythene sheeting laid on slab soffits with 150 mm side laps to receive concrete	m <sup>2</sup>	3		-
	<b>Reinforcement</b> <i>(Rates to include cutting, bending, laps allowance and placing on site)</i>				
	D10 reinforcement bars (weighing 0.62kg/m) (measured net-no allowance made for laps)	kgs	46		-

<b>Form Work</b> (Provide and fix shuttering including propping, strutting and striking all as specified)				
sawn form work fair finish to:				
Formwork to edges of floor slab girth not exceeding 200mm	m	7		-
Soffits	m <sup>2</sup>	3		-
<b>Concrete</b> (Vibrated reinforced concrete class 20 (1:2:4) with 20mm maximum aggregate as described in)				
200mm floor slab	m <sup>3</sup>	0.6		-
<b>Super Structure</b>				
<b>Masonry Walling</b> (Dressed masonry walling in cement and sand (1:2) mortar reinforced with and including 25 x 3mm thick hoop iron in every alternate course.)				
200mm Masonry walling	m <sup>2</sup>	9.5		-
75mm x 50mm Sawn cypress wall plate	m	10		-
75mm x 50mm sawn cypress for studs, trimmers, bracing and top plates	m	100		-
Gauge 28 profile sheets(blue painted)	m <sup>2</sup>	35.96		
<b>Roofing Works</b>				
<b>Capentry &amp; Joinery</b> (Rates to include for delivery, cuttings, fastenning with hoop iron and joinery)				
75mm x 50mm Sawn cypress for Rafters and purlins	mtrs	26		
Prepainted 200mm x 25mm Fascia board	mtrs	11		
<b>Cladding</b>				
Gauge 28 profile sheets(blue painted)	m <sup>2</sup>	8		
<b>Subtotal 1</b>				-
<b>Finishes</b>				

<b>Wall finishes</b> 15mm plaster: Cement and sand mortar (1:2) as described to:				
Interior wall surfaces	m <sup>2</sup>	6		
<b>Floor Finishes</b> cement sand screed as described in:				
32mm thick screed	m <sup>2</sup>	2.5		
<b>Doors &amp; Windows</b>				
<b>Windows</b> <i>Supply and Fix the following purpose made steel Loured windows manufactured from heavy duty standadsections primedwith one coat of red oxide primer and fixing to masonry or concrete head and jambcomplete with closing mechanism and other fittings.</i>				
Window size 600 x 600 mm glass windows with glazing	Pcs	2		
<b>Doors</b> Supply and fixing of 50mm thick solid Cored ordinary flush door size 900mm x 2100mm with lipping	No	2		
3 Lever Mortice Lock	No	2		
<b>Pit Latrine (0.9mtrs x 1.5mtrs x 5</b>				
<b>Excavation for cuttings</b>				
Excavation for top soil depth n.e 0.25	m <sup>3</sup>	0.4		
Depth between 0.25 - 0.5	m <sup>3</sup>	0.4		
Depth between 0.5 - 1	m <sup>3</sup>	0.8		
Depth between 1 - 2	m <sup>3</sup>	1.5		
Depth between 2 - 5	m <sup>3</sup>	5		
Allow a provisional sum for rock excavation	m <sup>3</sup>	7		
<b>Subtotal 2</b>				-
<b>Collection page</b>				-
<b>Sub Total 1 Brought Forward</b>				=====
<b>Sub Total 2 Brought Forward</b>				=====
<b>Grand Total</b>				=====

### FENCING WORK

Item No.	Description (100meters by 100 meters)	Unit	Qty	Unit Rate (Kshs)	Total Amount (Kshs)
	<b>Fencing works</b> <b>Fabricate, Deliver and install</b>				
	50mm x 50mm x 2.5mm 6ft galvanized gauge 12.5G minimum wire diameter 2.05mm chainlink with 6 rows of galvanised wire on 100mm x 100mm x 8ft long/high prepainted concrete fencing posts at 3m c-c Note: The tilt must be 300mm at 45 degree with 6 holes (four on the vertical section and two on the 300mm tilth for anchorage of barbed wire to posts. <i>(Rates to include a 150mm thick concrete C15/20) skirting at the fence base)</i>	Mtrs	400	-	-
	Supply,provide and install 100mm x100mm, 8ft long/high concrete poles at 3m spacing C-C <i>(rates to include installation of two corner posts)</i>	Pcs	140	-	-
	Supply,provide and install 100mm x100mm concrete bracing poles	Pcs	21	-	-
	Provide materials,fabricate and install security gate indicated on drawing and as directed by the Engineer. The metallic gate to be painted in 2 coats primer and finished with final coat first grade gloss paint (perch blue). Size 4m x 2.4m high - double leaf with small door inside.	Set	1		-
	Allow excavation for the two pillars 0.8m by 0.8m by 1m	m <sup>3</sup>	1		-
	Provide materials and allow constructions of two reinforced concrete pillars to support the Main gate, concrete gade of M15 at a ratio of mix 1:2:4. The column pillars should have measurement 200mm x 200mm x 2400mm with reinforcement bars of D12 and the ring beam of D8 at a spacing of 200mm.	m <sup>3</sup>	0.5		-
	<b>Total Brought Forward to collection page</b>				-

<b>Moite BMU - Box profile</b>		
<b>Item No</b>	<b>Description</b>	<b>Amount</b>
	Preliminaries & General	-
	Dry Fish store	-
	Landing Bay	
	Twin Latrine	-
	Fencing	-
	<b>Total</b>	-
	<b>10% Contingency</b>	-
	<b>Grand Total</b>	-

All cost should be Exclusive of VAT

Amount in word.....

Company's Name .....

Supplier's Name .....

Address .....

Signature .....

## **GENERAL TERMS AND CONDITIONS**

- 1) **Price:** The prices stated on the order shall be held firm for the period and / or quantity unless specifically stated otherwise
- 2) **Source of Instructions:** The Supplier shall not seek nor accept instructions from any source external to SND in relation to the performance of the contract.
- 3) **Assignment:** The Supplier shall not assign, transfer, sublet or subcontract the contract or any part thereof without the prior written consent of the Buyer.
- 4) **Corruption:** The Supplier shall not give, nor offer to give, anyone employed by the Buyer an inducement or gift that could be perceived by others to be a bribe. The Supplier agrees that a breach of this provision may lead to an immediate end to business relationships and termination of existing contracts.
- 5) **Confidentiality:** All data, including but not limited to, maps, drawings, photographs, estimates, plans, reports and budgets that has been compiled by or received by the Supplier under the contract shall be the property of SND and shall be treated as confidential. All such data should be delivered to the authorized officials representing the Buyer upon request.
  - a. The Supplier may not communicate at any time to any other person, government or authority external to SND, any information that has been compiled through association with SND which has not been made public except with written authorization from the Buyer. These obligations do not lapse upon termination of the contract.
- 6) **Use of Emblem or Name:** Unless otherwise agreed in writing; the Supplier shall not advertise nor make public the fact that it is supplying goods or services to the Buyer, nor shall the Supplier in any way whatsoever use the name or emblem of SND in connection with its business or otherwise.
- 7) **Observance of Law:** The Supplier shall comply with all laws, ordinances, rules and regulations bearing upon the performance of its obligations under the terms of the contract.
- 8) **Force Majeure:** The meaning of the term can be taken to mean acts of God, war (declared or not), invasion, revolution, insurrection or acts similar in nature or force.
  - a. In the event of and as soon as possible after the occurrence of any cause deemed force majeure, the Supplier must inform the Buyer of the full particulars in writing. If the supplier is rendered

- unable either in part or in whole to perform its obligations then the Buyer shall take such action as it considers, in its sole discretion, to be appropriate or necessary in the circumstances.
- b. if the Supplier is permanently rendered incapable in whole or part by reason of force majeure to complete its obligations and responsibilities under the contract then the Buyer will have the right to suspend or terminate the contract on the same terms and conditions laid out in section 9, Cancellation.
- 9) **Cancellation:** The Buyer reserves the right to cancel the contract should it suspend its activities or through changes to its mandate by virtue of the Executive Council of SND and/or lack of funding. In such a case the Supplier shall be reimbursed by SND for all reasonable costs incurred by the Supplier, including all materials satisfactory delivered and conforming to specification and terms of contract, prior to receipt of the termination notice.
- a. Should the supplier encounter solvency problems including, but not limited to, bankruptcy, liquidation, receivership and similar, the buyer reserves the right to terminate the contract immediately without prejudice to any other right or remedy it may have under the terms of these conditions.
- 10) **Warranty:** The Supplier shall provide the Buyer with all manufacturers' warranties. The supplier warrants that all goods supplied in relation to the contract meets specification, is defect free and is fit for the purpose of the intended use. If, during the warranty period, the goods are found to be defective or non- conforming to specification, the Supplier shall promptly rectify the defect. If the defect is permanent then at the choice of the Buyer the Supplier will either replace the item at their cost or reimburse the Buyer.
- 11) **Inspection and Test:** The Supplier must inspect the goods prior to dispatch to ensure conformance to specification and/or any other provisions of the contract. The Buyer reserves the right to inspect the goods for compliance with specifications and provisions of the contract. If, in the Buyers' opinion, the goods and/or services do not comply with the specification, the Buyer will inform the Supplier in writing. In such a case the Supplier shall take the necessary action to ensure compliance, liability for any additional cost incurred for rectifying compliance will rest with the Supplier.

- 12) **Changes:** The Buyer reserves the right to make reasonable changes at any time to the specification, drawings, plans, quantity, packing instructions, destination, or delivery instruction. If any such change affects the price of goods or performance of service the Supplier and Buyer may negotiate an equitable adjustment to the contract, provided that the Supplier claims for adjustments in writing to the Buyer within 30 days from being notified of any change.
- 13) **Export Licence:** If export licenses are required for the goods, the Supplier has the responsibility to obtain that license.
- 14) **Payment Terms:** Unless otherwise agreed, payment terms will be net 30 days from receipt of a correctly prepared invoice.
- 15) **Pre-bid meeting:** For all interested and potential bidders, a mandatory pre-bid site meeting will be held at the project site from **Monday, 18th May 2026 to Tuesday 19<sup>th</sup> May 2026 starting from 8:00 A.M.**

Technical staff from SND will be available to respond to any questions related to this tender.

Companies intending to participate are required to confirm, share and submit the details of their representative (Full names, I.D numbers and designation) via [procurement@sndafrica.org](mailto:procurement@sndafrica.org). In case further clarification is needed regarding this tender, please **contact Eng. Joseph Gitu at 0700474055**

A signed site attendance certificate will be issued during the pre-bid meeting and will form part of the mandatory requirements for tender submission.

- 16) **Bid Submission:** All bids should be submitted electronically via [procurement@sndafrica.org](mailto:procurement@sndafrica.org) or physically at **SND Moyale office** in a sealed envelope referenced **SND -WFP/LTP-COE Moite BMU/2026-01** as the subject of the Email or on the ENVELOPE **on or before Wednesday, 27<sup>th</sup> May 2026**

## **ESSENTIAL REQUIRED DOCUMENTS**

The tenderer must attach the following documents to the tender to be submitted;

### **1. Mandatory Requirements. (Total Score 25 Marks)**

- i.** Business registration certificate or Certificate of incorporation **(5 Marks)**
- ii.** A signed pre-bid meeting site attendance certificate **(5 Marks)**
- iii.** CR12 or Copies of ID card in case of a sole proprietorship & partnership Businesses **(3 Marks)**
- iv.** Valid Business permit **(3 Marks)**
- v.** PIN no & KRA Compliance certificate (3 Marks)
- vi.** Duly filled, completed and stamped BOQ (3 Marks)
- vii.** Duly signed and stamped certificate of pre-bid site meeting certificate (3 Marks)

### **NB.**

- **Insurance of works certificate – Successful Bidders will be required to submit insurance of works, materials, equipment, workers and third-party beneficiaries upon award of bid**
- **Only those who provide all the mandatory requirement will proceed to technical evaluation**

### **2. Technical Documents (Total Score 65)**

- i.** Certificate of registration with at least NCA 7 and Practicing license (preferably building works) - **9 Marks**
- ii.** Technical staff; **(9 Marks)**
  - a) Site representative/site agent** - minimum diploma in Civil/Construction management. Should be on site full time with minimum of 3 years' experience in assignments of similar nature, proof of registration with Engineers Board of Kenya (Attach CVs & Certificates)
  - b) Welder** - minimum 3 years exp. Certificate in welding & fabrication (Attach CVs and Relevant certificates)
  - c) Mason** - minimum 3 years. Certificate in masonry (Attach CVs and Relevant certificates)

- iii. Provide proof of availability of the following equipment (12 Marks)
  - a) Welding Gen sets (attach proof of ownership/lease)
  - b) Concrete mixers (attach proof of ownership/lease)
  - c) Poker vibrator (attach proof of ownership/lease)
  - d) Hydraulic/electric Jackhammers & Compressors (attach proof of ownership/lease)
- iv. Proof of similar assignments completed at least 3 certificate of completion (27 Marks)
- v. Audited Report for the last 2 years or Bank statement for the last 6 Month (3 Marks)
- vi. A detailed work plan and implementation schedule for the proposed works (3 Marks)
- vii. Work methodology(2 Marks)

**NB. A minimum combined score of 75% in the Mandatory and Technical evaluations must be achieved for a bidder to qualify for the Financial Evaluation stage.**

**3. Financial evaluation (Total Score 10%)**

- Financial evaluation shall be conducted **only for technically qualified bidders.**
- The **lowest-priced quotation** shall receive the **maximum score of 10%.**
- Other bidders shall be scored using the following formula:

$$\text{Financial Score} = (\text{Lowest Quoted Price} / \text{Bidder's Price}) \times 10$$

**Award Decision:** The contract will be awarded to the **technically compliant bidder with the most advantageous financial offer.**

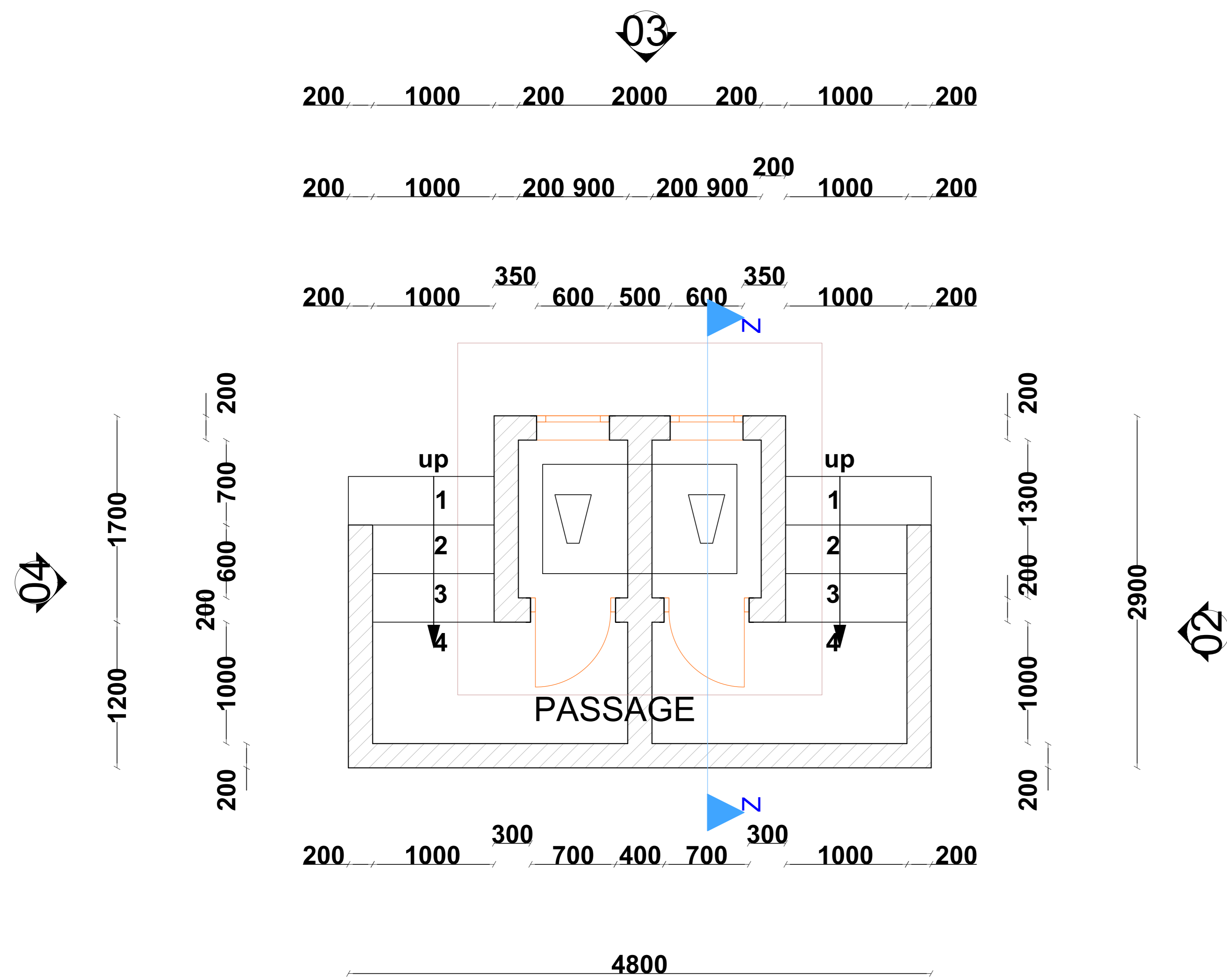
**For Official Use Only**

No.	Name of staff	Designation	Date	Signature
1				
2				
3				

**NB:**

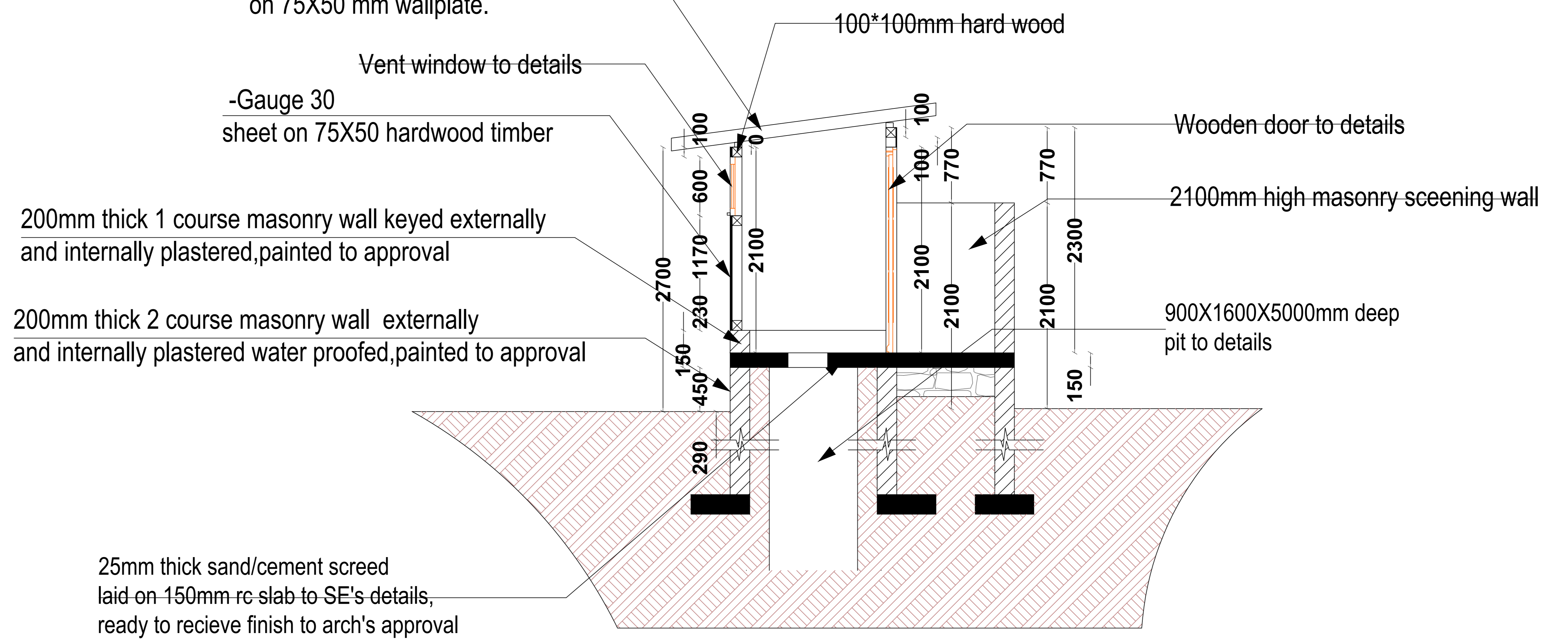
- **Tender to be filled as per the specification given and to be submitted on or before 27<sup>th</sup> May 2026 via [procurement@sndafrica.org](mailto:procurement@sndafrica.org) or to be delivered to SND offices at Moyale or Marsabit.**
- **The RFQ should be referenced [SND -WFP/ LTP- COE Nakuron BMU/2026- 01](#) as the subject of the Email or on the ENVELOPE**



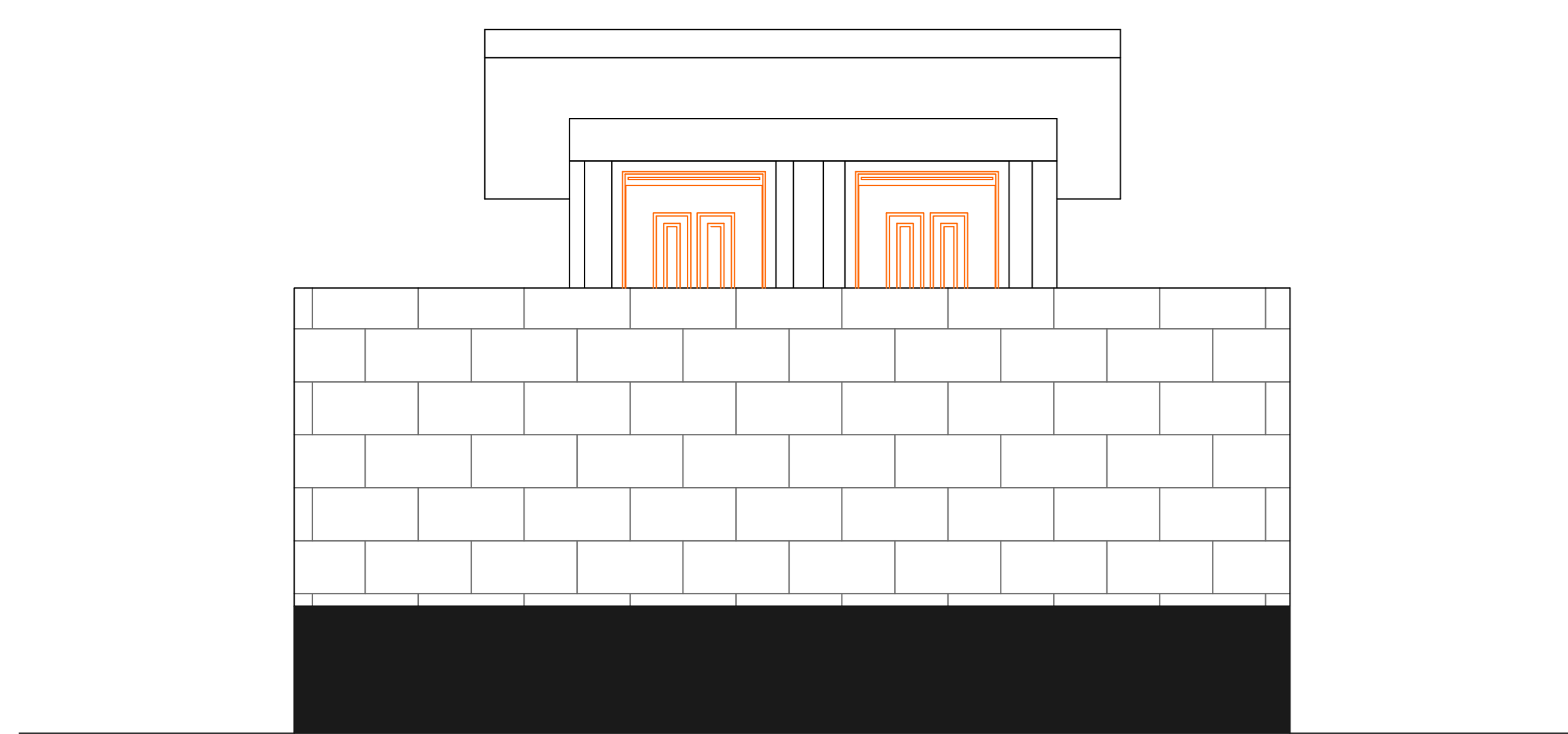


**PLAN LAY OUT**

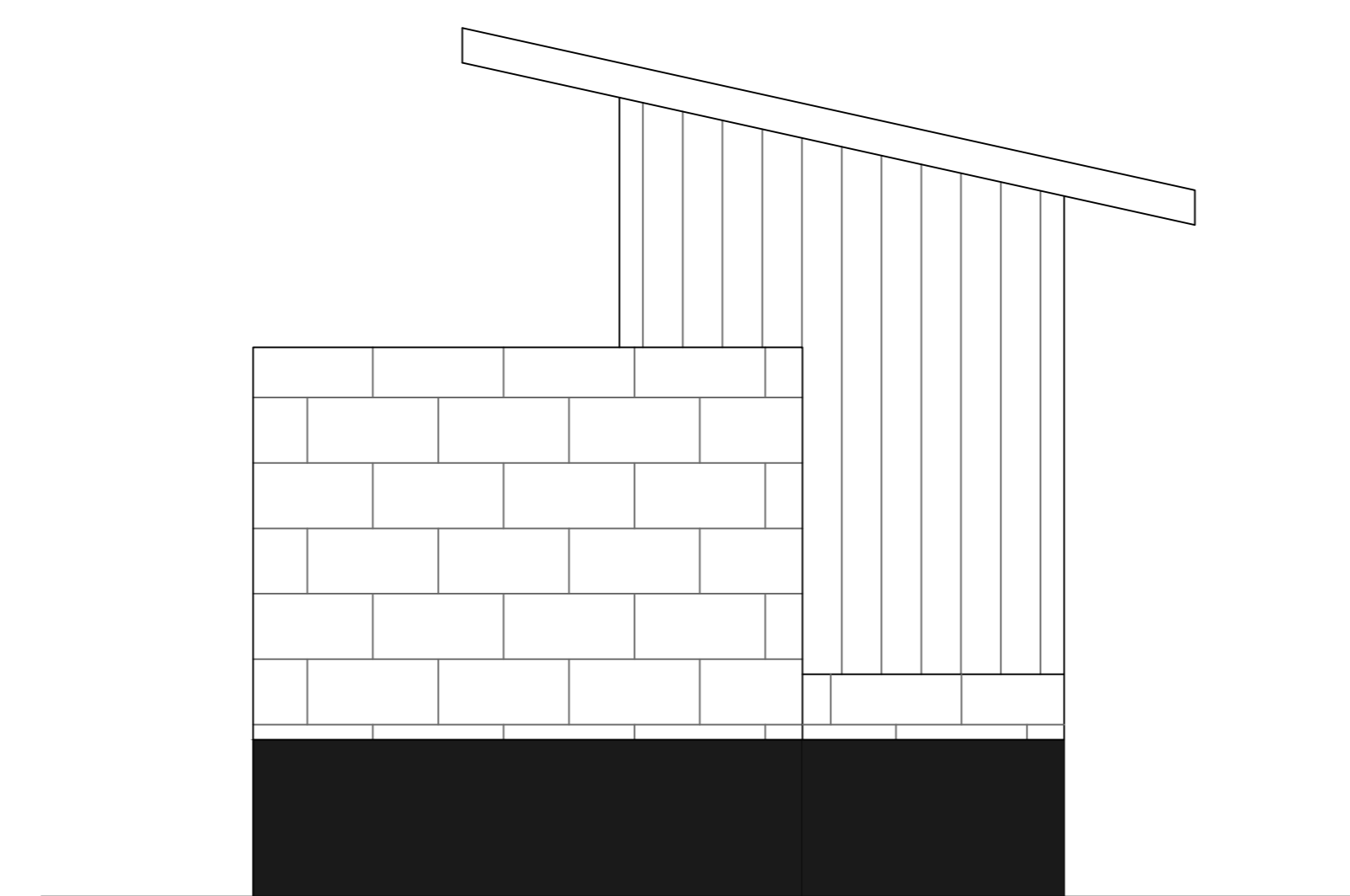
Roof pitch- 8 Deg.. -Gauge 30 roofing sheet on 75X50 rafters, 50X50mm purlins@ 1250 mm c/c on 75X50 mm wallplate.



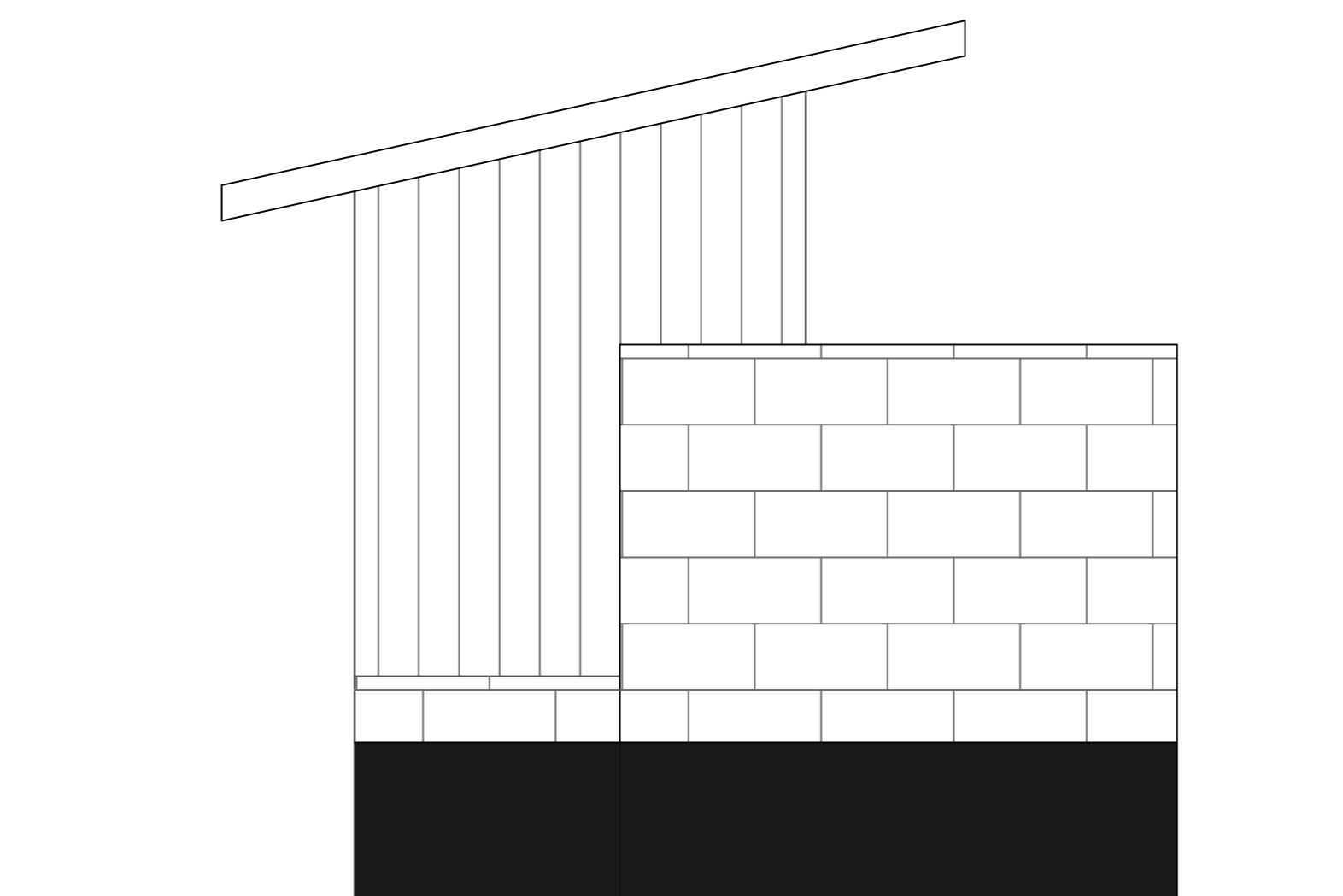
**SECTION X-X**



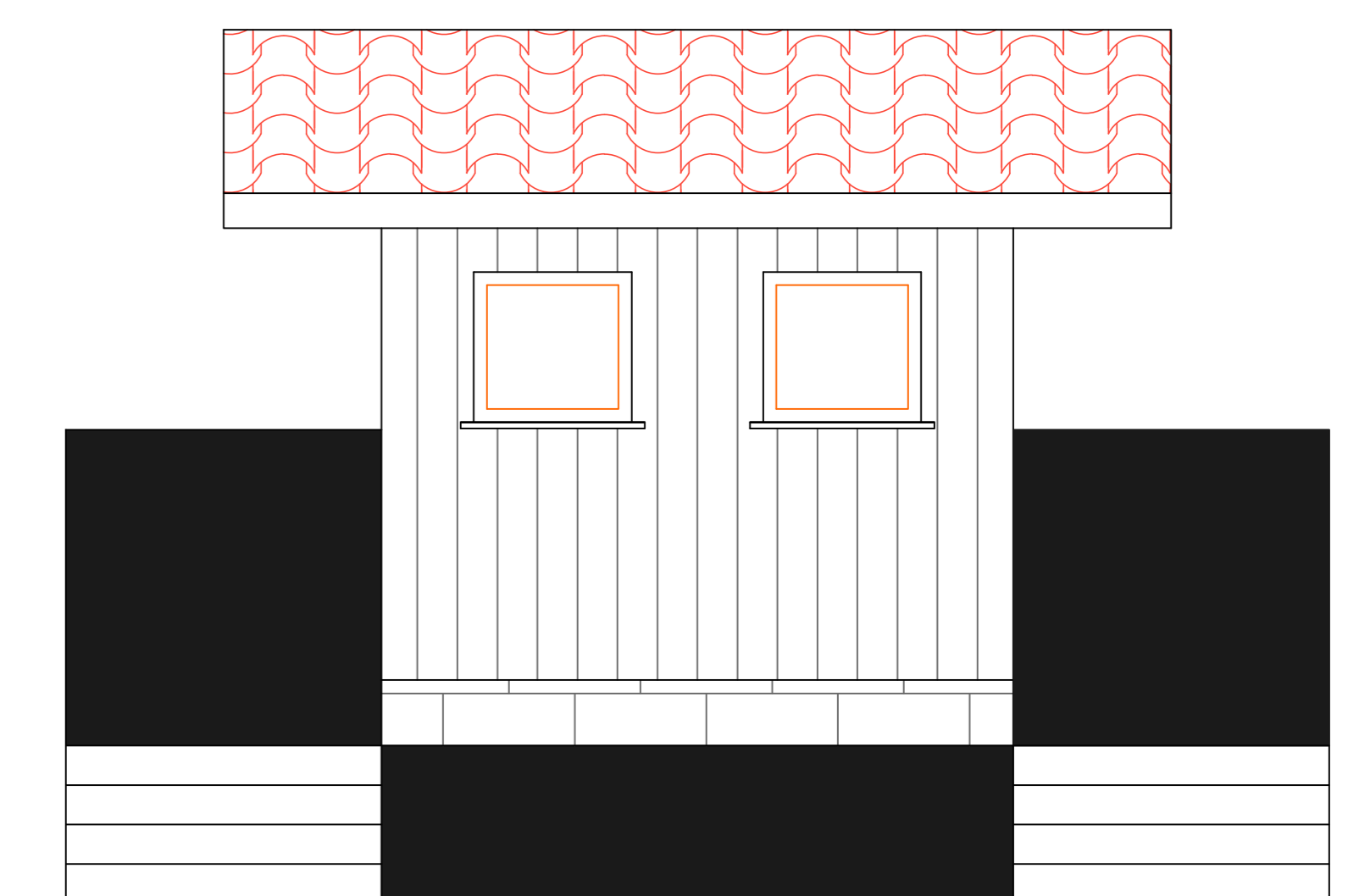
**ELEVATION 01**



**ELEVATION 02**

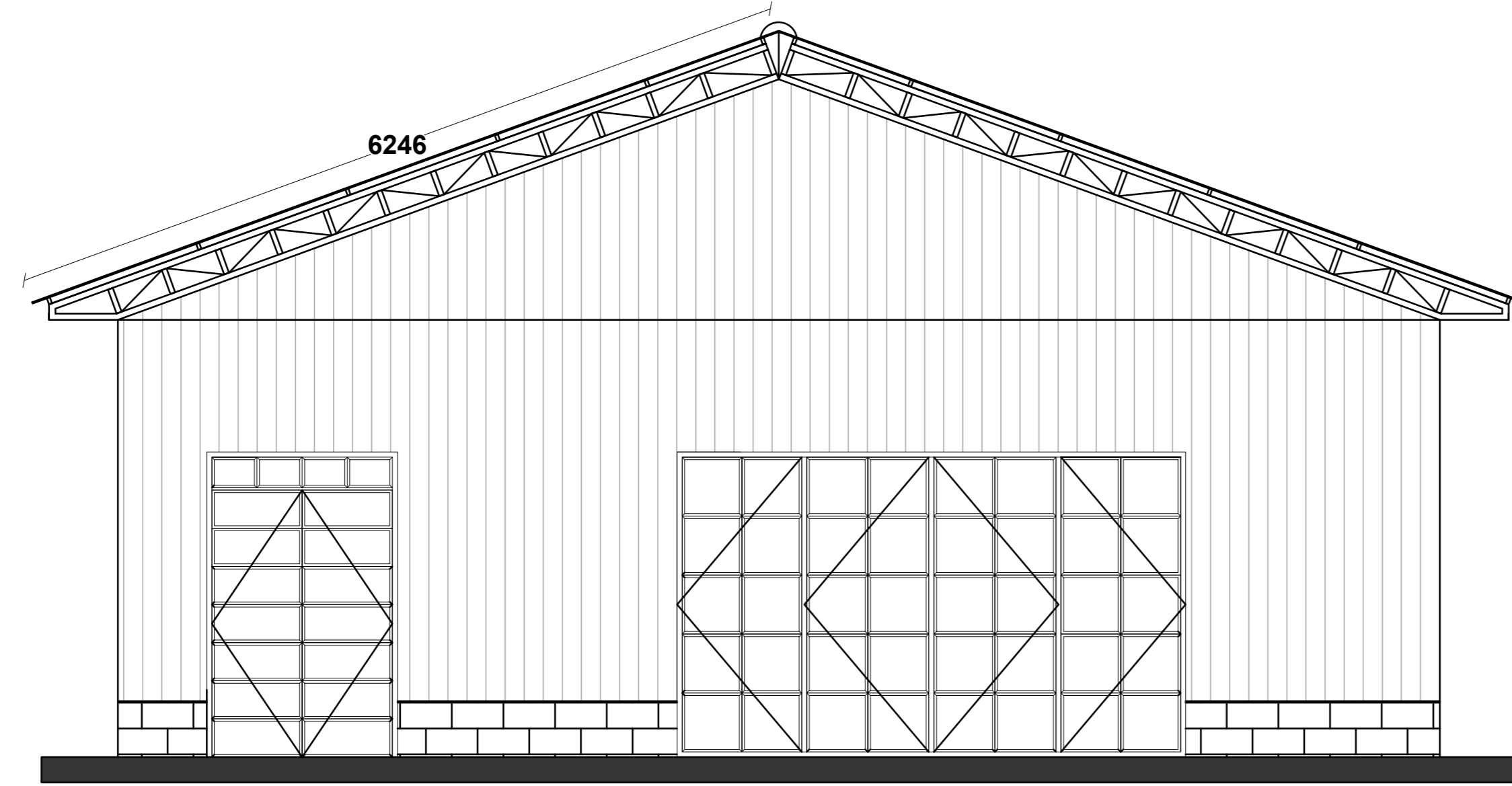


**ELEVATION 02**

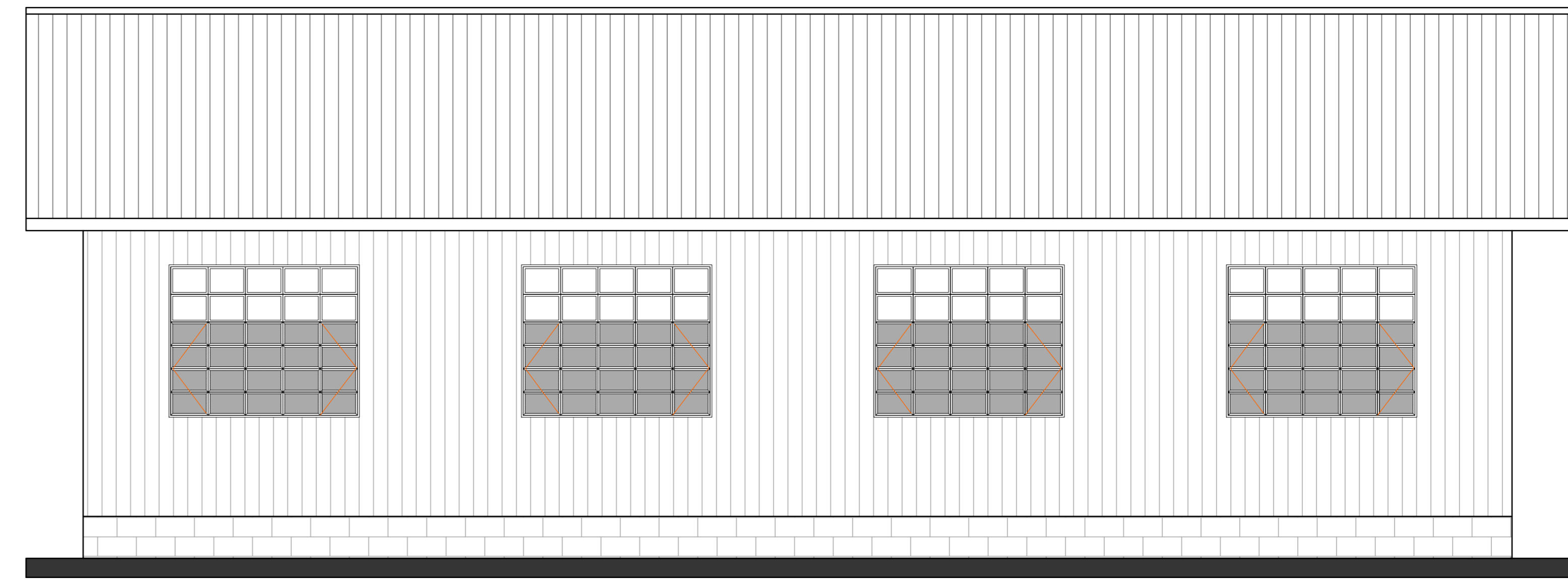


**ELEVATION 03**

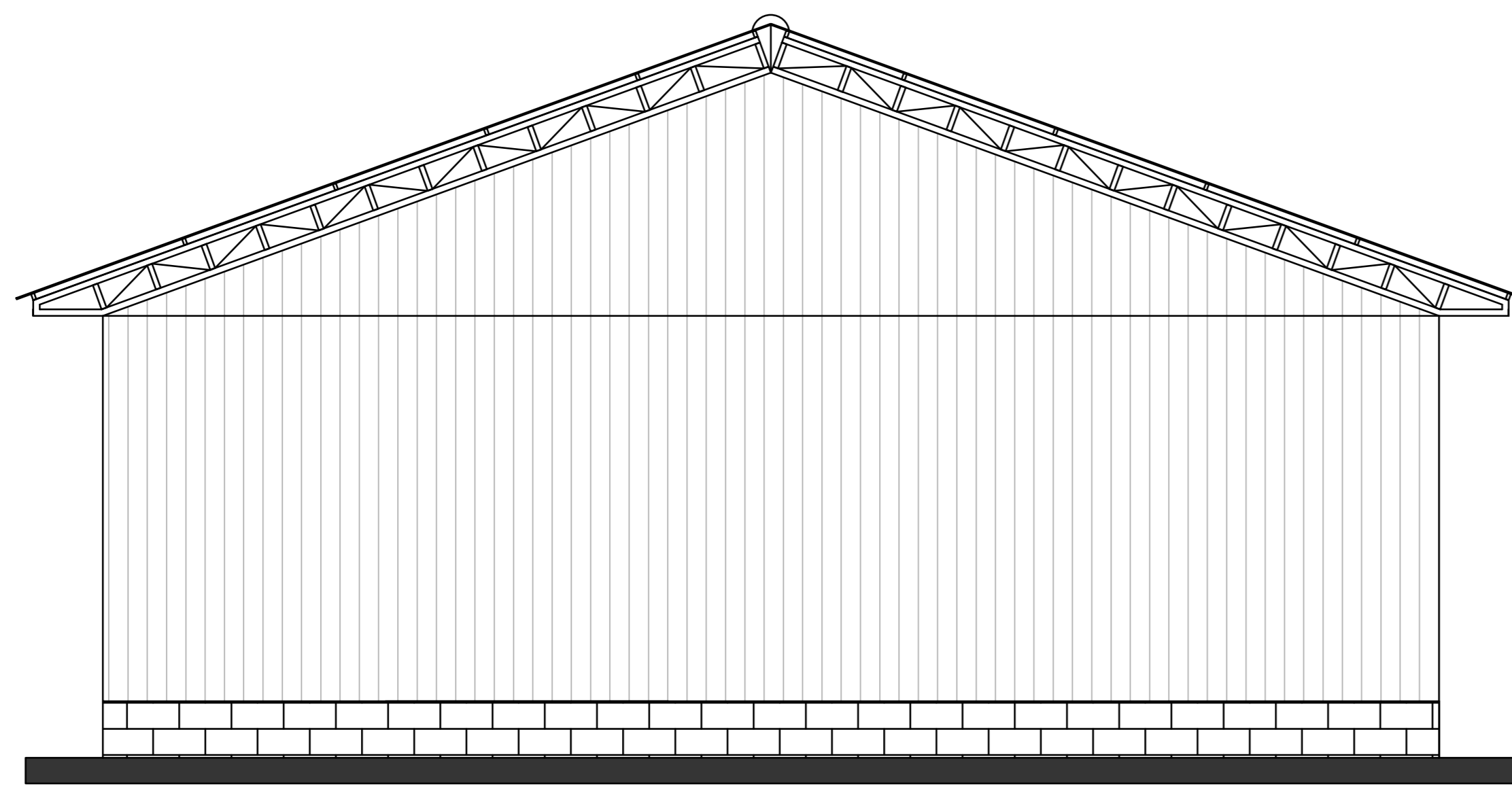
CONSULTANT	REV NO.	DESCRIPTION	DATE	CLIENT	PROJECT DETAILS		Date:	Job No:
					PROJECT TITLE:	Sustainably Unlocking the Economic Potential of Lake Turkana Programme	Designed:	
					DRAWING TITLE:	<b>Proposed Latrine</b>	Drawn:	Cad File Name
							Checked:	
							Approved:	DWG. No.
							Scale:	Rev. No.
								WFP/SND/Pic Lat-01



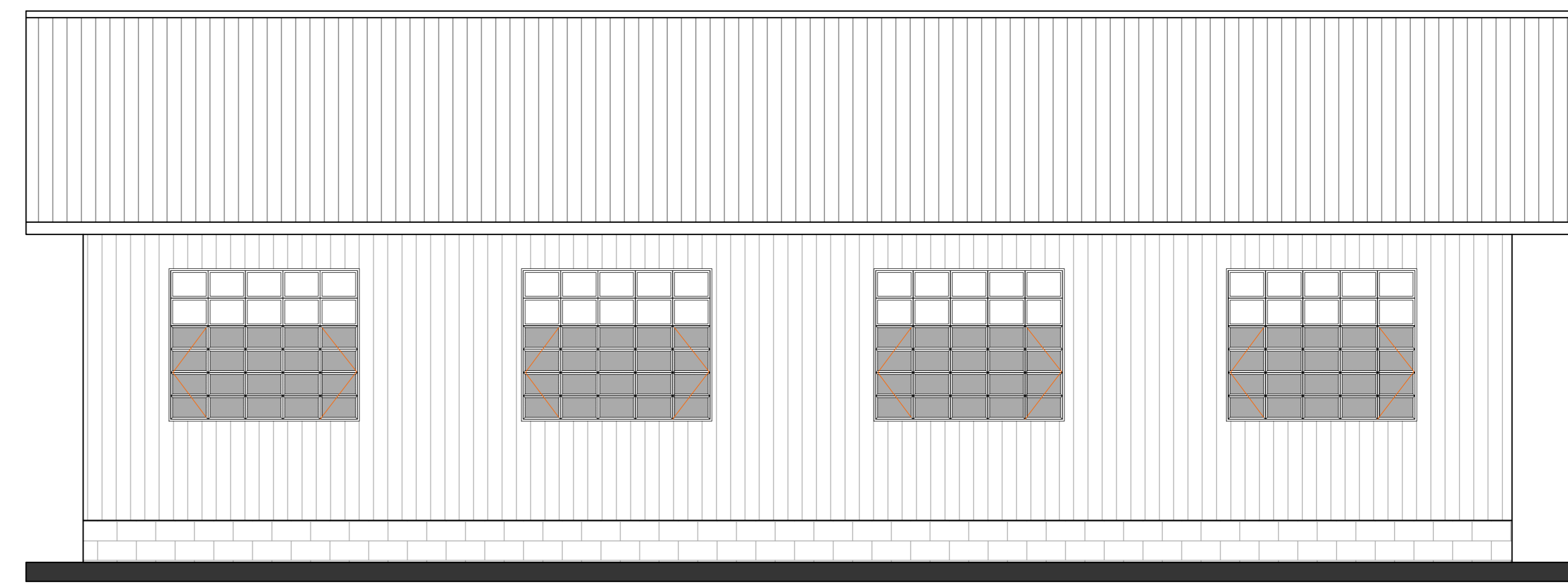
**ELEVATION 01**



**ELEVATION 02**



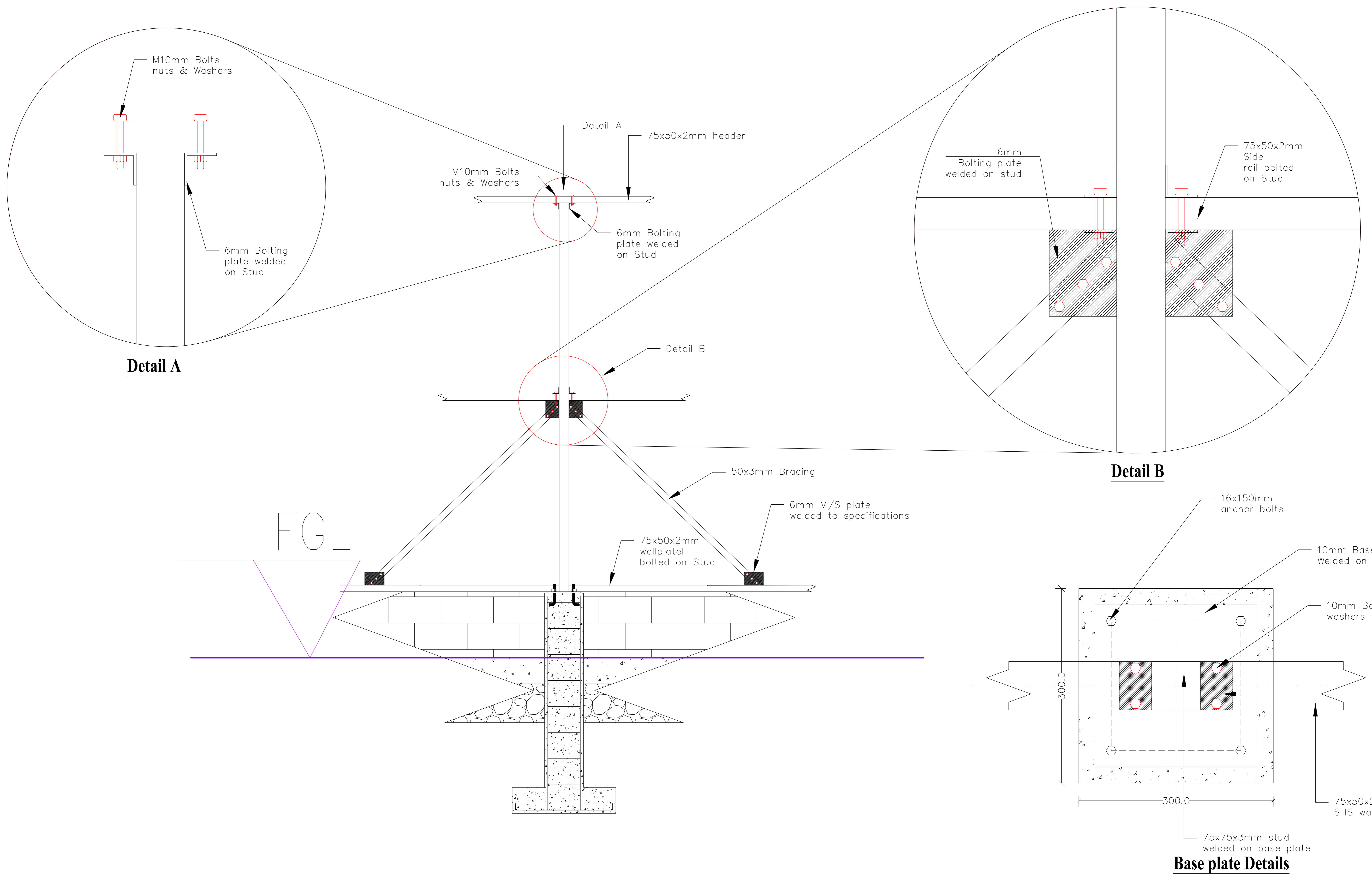
**ELEVATION 03**



**ELEVATION 04**

CONSULTANT	REV NO.	DESCRIPTION	DATE	CLIENT	PROJECT DETAILS		Date:	May 2025	Job No:
					<b>PROJECT TITLE:</b>	Sustainably Unlocking the Potential of Lake Turkana Project	<b>Designed:</b>		<b>Cad File Name</b>
					<b>DRAWING TITLE:</b>	Dry Fish Store Elevations	<b>Drawn:</b>		
							<b>Checked:</b>		<b>DWG. No.</b> WFP/SND/LTP/ Moite D.S 02-2
							<b>Approved:</b>		
							<b>Scale:</b>	1:40	





**Detail A**

**Detail B**

**Base plate Details**

CONSULTANT	REV NO.	DESCRIPTION	DATE	CLIENT	PROJECT DETAILS		Date:	Job No:
					<b>PROJECT TITLE:</b>	<b>Sustainably Unlocking the Potential of Lake Turkana Project</b>	<b>Designed:</b>	
					<b>DRAWING TITLE:</b>	<b>Dry Fish Store Fabrication Details</b>	<b>Drawn:</b>	<b>Cad File Name</b>
							<b>Checked:</b>	
							<b>Approved:</b>	<b>DWG. No.</b>
							<b>Scale:</b>	<b>Rev. No.</b>
								WFP/SND/LTP/ Moite D.S 03-4