



**READVERTISEMENT**

**INVITATION TO BID (ITB)**

**STRATEGIES FOR NORTHERN DEVELOPMENT (SND) – ETHIOPIA**

**TENDER DOCUMENT FOR CONSTRUCTION AND SOLARIZATION OF DUBLUK LIVESTOCK MARKET  
ANTICIPATORY ACTION INNOVATION HUB**

**(Dubluk Office) Location: Dubluk Woreda, Borana Zone, Oromia, Ethiopia**

**Tel: 09 83 74 13 97 /09 26 42 15 14**

**E-mail: [procurement@sndafrica.org](mailto:procurement@sndafrica.org)**

**Website: [www.sndafrica.org](http://www.sndafrica.org)**

**REF: SND- EJR Project-Dublik /2026–001**

***Closing Date: 23rd February 2026***



## Tender Invitation

Strategies for Northern Development (SND) is a local non-governmental organization working with nomadic pastoralist communities in Northern Kenya and Southern Ethiopia. SND was registered in Ethiopia with an agency for civil society organization on 21st of October 2019 in the Federal Democratic Republic of Ethiopia. SND-Ethiopia, Borana Office based in Yabello and Dubluk town, Borana zone Oromia National Regional State is implementing both development and emergency projects that funded by different donors.

SND is driven by a vision to see a society where all pastoralist communities are resilient and live a dignified life and a mission to empower and transform pastoralist communities to be self-resilient in life. Key thematic areas of focus are;

- i. Peace, Conflict Resolution and Governance
- ii. Humanitarian Assistance and Emergency Response
- iii. Protection, Gender Equality and Inclusion
- iv. Climate Justice and Resilience
- v. Livelihood and Enterprise Development
- vi. Water, Sanitation, and Hygiene (WASH).
- vii. Institutional Effectiveness

SND Ethiopia, through funding from Terre des Hommes (TdH) Netherlands under the EJRP Project in Dubluk, invites qualified and eligible bidders to submit their sealed bids for **construction of a utility building (8.6\*3.4) and installation solar powered lighting system and associated appliances**

For this purpose, we hereby, invite bidders to submit quotations for the execution and completion of the above assignments as provided in the tender document.

**DESCRIPTION OF WORK/SERVICE**

**CONSTRUCTION OF AUTILITY BUILDING AND INSTALLATION SOLAR POWERED LIGHTING SYSTEM AND ASSOCIATED APPLIANCES**

**CONSTRUCTION OF AUTILITY BUILDING**

Item No	Description	U.O.M	Qty	Rate	Amount
	<b>Foundation works</b> <i>(Quantities provided are provisional)</i>				
1	<b>Excavation</b> <i>Rates to include site clearance, spoil Disposal, maintaining and supporting sides and keeping free from water, mud and fallen materials by bailing, pumping or otherwise</i>				
1.1	Excavation over site depth n.e 0.25mtrs	m <sup>2</sup>	73		
1.2	Excavation for strip foundation to depth n.e 1 mtrs	m <sup>3</sup>	32		
1.3	Excavation for column footings	m <sup>3</sup>	15		
2	<b>Concrete works</b> <i>Vibrated reinforced concrete class 20 (1:2:4) with 20mm maximum aggregate as described in:</i>				
2.1	Strip Foundation	m <sup>3</sup>	5		
2.2	Column Footings 12 No.	m <sup>3</sup>	2		
3	<b>Reinforcement</b> <i>(Rates to include cutting, bending, laps allowance and placing on site)</i>				
3.1	D10 reinforcement bars (weighing 0.62kg/m) (measured net-no allowance made for laps)	Kgs	215		
4	<b>Masonry Walling</b> <i>(Foundation quarry stone walling in cement and sand (1:3) mortar reinforced with and including 25 x 3mm thick hoop iron in every alternate course.)</i>				
4.1	200mm for strip foundation	m <sup>2</sup>	45		
5	<b>Floor Slab</b>				
	<b>Filling</b>				
	<i>Filling to completed structures including compaction as specified.</i>				

5.1	300 mm thick approved hardcore filling spread, well rammed and compacted in 150mm layers to receive concrete surface bed	m <sup>3</sup>	25		
5.2	50mm thick approved murrum to hardcore surface	m <sup>2</sup>	93		
6	<b>Water proofing</b>				
6.1	Single layer of 1000 gauge polythene sheeting laid on blinded hardcore with 150 mm side laps to receive concrete	m <sup>2</sup>	93		
6.2	200mm Hessian based bituminous felt 3 ply membrane damp proof course or other equal approved damp-proof course; laid on and including cement and sand (1:4) mortar:-	Mtrs	40		
7	<b>Reinforcement</b>				
7.1	A142 BRC Mesh (measured net-no allowance made for laps)	m <sup>2</sup>	93		
7.2	Supply and application of Termidor 25EC pesticide treatment for the control of termites to the soil beneath the foundations	m <sup>2</sup>	93		
8	<b>Form Work</b> (Provide and fix shuttering including propping, strutting and striking all as specified)				
	sawn form work fair finish to:				
8.1	Formwork to edges of floor slab girth not exceeding 200mm	M	40		
9	<b>Concrete</b> (Vibrated reinforced concrete class 20 (1:2:4) with 20mm maximum aggregate as described in)				
9.1	150mm floor slab	m <sup>3</sup>	12		
	<b>Sub total 1</b>				-
	<b>Super Structure</b>				
1	<b>Masonry Walling</b> (Dressed masonry walling in cement and sand (1:3) mortar reinforced with and including 25 x 3mm thick hoop iron in every alternate course.)				
1.1	200mm Masonry walling	m <sup>2</sup>	72		
2	<b>Reinforcement</b> (Rates to include cutting, bending, laps allowance and placing on site)				
2.1	D10	Kgs	60		
2.2	D8	Kgs	50		
3	<b>Form Work</b> (Provide and fix shuttering including propping, strutting and striking all as specified)				
	sawn form work smooth finish to:				

3.1	200mm x 200mm columns	m <sup>2</sup>	19		
4	<b>Concrete</b> (Vibrated reinforced concrete class 20 (1:2:4) with 20mm maximum aggregate as described in)				
4.1	200mm x 200mm columns	m <sup>3</sup>	1		
	<b>Ring Beam</b>				
5	<b>Form Work</b> (Provide and fix shuttering including propping, strutting and striking all as specified)				
	sawn form work smooth finish to:				
5.1	300mm thick tie Beam	m <sup>2</sup>	25		
6	<b>Reinforcement</b> (Rates to include cutting, bending, laps allowance and placing on site)				
6.1	D10	Kgs	95		
6.2	D8	Kgs	75		
7	<b>Concrete</b> (Vibrated reinforced concrete class 20 (1:2:4) with 20mm maximum aggregate as described in)				
7.1	300mm thick beam	m <sup>3</sup>	2.5		
	<b>Roofing Works</b>				
8	<b>Capentry &amp; Joinery</b> (Rates to include for delivery, cuttings, fastenning with hoop iron, joinery and verandah support stanchions)				
8.1	150mm x 50 mm Sawn cypress wall plate	Mtrs	40		
8.2	100mm x 50mm Sawn cypress to Trusses	Mtrs	100		
8.3	50mm x 50mm Sawn cypress to purlins	Mtrs	105		
8.4	200mm x 25mm planed Facia Board	Mtrs	41		
9	<b>Cladding</b>				
9.1	Gauge 28 box profile sheets(blue painted)	m <sup>2</sup>	98		
9.2	Gauge 28 Ridge cap	Mtrs	13		
9.3	150mm PVC gutters Heavy duty UPVC rainwater gutters & down pipes and fittings : solvent welded and jointing in approved adhesive built into concrete or fixed with approved holder brackets: to Architects approval(provisional)	Mtrs	25		

	<b>Finishes</b>				
10	<b>Wall finishes</b> <i>15mm plaster: Cement and sand mortar (1:2) as described to:</i>				
10.1	Interior wall surfaces	m <sup>2</sup>	75		
	<b>Sub total 2</b>				-
1	<b>Floor Finishes</b> cement sand screed as described in:				
1.1	32mm thick screed with a steel finish.	m <sup>2</sup>	62		
1.2	Supply and fix 400mm x 400mm x 4mm ceramic floor tiles properly aligned and finished with recommended grout	m <sup>2</sup>	62		
2	<b>Paint works</b> <i>Prepare and apply three coats plastic emulsion paint to:</i>				
2.1	Plastered Walls	m <sup>2</sup>	75		
2.2	ring beam Beam	m <sup>2</sup>	12		
2.3	Facia board	M	40		
3	<b>Ceiling</b> <i>Ceiling board on and including 50 x 50mm sawn cypress suspended brandering system at 600mm centres both ways with brandering end trims as specified : allow for all necessary timber stiffener or bearers where directed: including all cutting and trimming to light fittings, AC unit or other equipments as required (all quantities measured flat overall over light fittings): allow for all vertical and horizontal trims: All to approval</i>				
3.1	9mm plain ceiling board	m <sup>2</sup>	62		
	<b>Doors &amp; Windows</b>				
4	<b>Windows</b> <i>Supply and Fix the following purpose made steel casement windows manufactured from heavy duty standad sections primed with three coats of red super gloss paint and fixing to masonry or concrete head and jamb complete with closing mechanism and other fittings.</i>				
4.1	Window size 2000 x 1500 mm windows with 4mm glazing	Nr	6		

5	<b>Doors</b> Standard section purpose made heavy duty steel casement doors in modular panes complete with frame, sub-frame, mullions, transomes, glazing bars, burglar proofing bars horizontally and vertically in all openable panes, all necessary pegs, polished brass handles and stays, pin type heavy duty hinges, mosquito proofed hooded permanent vent, fixing lugs cast on, one coat red oxide primer before fixing in position and pointing with approved mastic sealant all round frame				
5.1	Double leaf Door size 1500 x 2500mm with 4mm glazing	Nr	2		
5.2	3 Lever Mortice Lock	Nr	2		
6	<b>Builders works related to services installations</b>				
6.	Provide for all the necessary builders works in connection with all the electrical services installation works (cabling, Trunking, pattresses, Junction boxes, clips, and fittings)	Sum	1		
7	<b>Fencing works</b> <b>Fabricate, Deliver and install</b>				
7.1	50mm x 50mm x 2.5mm plastic coated gauge 12.5G chainlink with 6 rows of galvanised wire on 50mm x 50mm x4mm, 2.7432m long/high prepainted angleline fencing posts at 2.5m c-c spacing with 50mm x 50mm x 4mm diagonal bracing at every 4 meters Note: The tilt must be 37cm at 45 degree with e 6 holes (four on the vertical section and two on the 37cm tilth for anchorage of barbed wire to angle line. (Rates to include a 150mm thick concrete C15/20) skirting at the fence base)	Mtrs	200		
7.2	Supply,provide and install 100mm x100mm,2.7432m long/high concrete poles at the four corners of the fence and well supported	Pcs	8		
7.3	Provide materials,fabricate and install security gate indicated on drawing and as directed by the Engineer. The metallic gate to be painted in 2 coats primer and finished with final coat first grade gloss paint (perch blue). Size 4M x 2.4m high - double leaf with small door inside.	Set	1		
7.4	Allow excavation for the two pillars 0.8m by 0.8m by 0.6m	m <sup>3</sup>	0.78		
7.5	Provide materials and allow constructions of two reinforced concrete pillars to support the Main gate, concrete gade of M15 at a ratio of mix 1:2:4. The column pillars should have measurement 200mm x 200mm x 2400mm with reinforcement bars of D10 and the ring beam of D8 at a spacing of 200mm.	m <sup>3</sup>	1		
	<b>Subtotal 3</b>				-
	<b>Collection page</b>				-
	<b>Sub Total 1 Brought Forward</b>				-

	<b>Sub Total 2 Brought Forward</b>				-
	<b>Sub Total 3 Brought Forward</b>				-
	<b>Total Utility Building</b>				-
	<b>Solar powered lighting system and associated appliances</b> <i>Rates to include for supply, installing testing and commissioning</i>				
1					
1.1	550 watts Solar panels (2 strings)	Nr	12		
1.2	5kw hybrid inverter charger <i>Complete with installation accessories</i>	Nr	1		
1.3	200Ah/48V lithium solar battery (10.2kwhr) <i>Complete with installation accessories and battery management unit</i>	Nr	3		
1.4	70mm <sup>2</sup> single core flex cable (Red)	Mtrs	20		
1.5	70mm <sup>2</sup> single core flex cable (black)	Mtrs	20		
1.6	6mm <sup>2</sup> single core PV cables (R & B)	Mtrs	100		
1.7	20amps double pole DC breaker	Nr	2		
1.8	40Amps/1000V DC isolator <i>Complete with installation accessories</i>	Nr	1		
1.9	40Amps double pole AC breaker (MCB mains) <i>Complete with installation accessories</i>	Nr	1		
1.10	200amps/48V double pole DC breaker (Battery Inverter) <i>Complete with installation accessories</i>	Nr	1		
1.11	220V - 240V / 63Amps 2 pole Automatic changeover switch <i>Complete with installation accessories</i>	Nr	1		
1.12	63Amps 2 pole MCB Type C (Grid-Inverter) <i>Complete with installation accessories</i>	Nr	1		
1.13	20Amps 2 pole MCB Type C - (lighting) <i>Complete with installation accessories</i>	Nr	1		
1.14	20Amps 2 pole MCB Type B - (Sockets) <i>Complete with installation accessories</i>	Nr	4		

1.15	Allow for PV protection devices (SPDs, MC4 Connectors, cable connectors, clips, cable lags, Busbars, mcb boxes, cable plugs, trunking,battery terminals, battery management system, earthings etc.)	Sum	1		
1.16	8 way MCB box complete with busbars and installation features	Nr	1		
2	<b>Builders works related to services installations</b>				
2.1	18watts - LED bulbs <i>Complete with installation accessories, bulb holders, screws</i>	Nr	4		
2.2	13amps Double sockets <i>Complete with installation accessories, pattresses, connectors, screws</i>	Nr	10		
2.3	2 gang double switches <i>Complete with installation accessories, pattresses, connectors, screws</i>	Nr	2		
2.4	2.5mm <sup>2</sup> twin flat with earth cable	Roll (100meters)	1		
2.5	1.5mm <sup>2</sup> twinflat with earth cable	Roll	1		
2.6	6mm <sup>2</sup> twinflat with earth cable	Mtrs	50		
2.7	Galvanized steel roof mounting structure <i>Complete with installation accessories and mounting screws</i>	watts	5500		
2.8	Battery racks for 4 modules <i>Complete with installation accessories and mounting screws</i>	Nr	1		
	<b>Total cost Solar Lighting System</b>				
	<b>VAT 15%</b>				
	<b>GRAND TOTAL UTILITY BUILDING &amp; SOLAR LIGHTING SYSTEM</b>				

Amount in word.....

.....

Company's Name .....

Contact Person .....

Phone Number.....

Signature & Stamp

.....

**NB. Bidders are required to include all associated costs, including VAT 15%, transport, install, loading, and unloading of materials, in their bid price.**

**Bid Requirements:**

a) **Eligibility:** Interested and eligible bidders shall submit copies of the following documents as part of their bid:

**1. Legal & Administrative Documents**

- Valid and renewed Business License
- Certificate of Registration
- Tax Identification Number (TIN)
- VAT Registration Certificate (if applicable)
- Valid Tax Clearance Certificate

**2. Construction & Professional Certification**

- Contractor Registration Certificate from the Ethiopian Construction Authority (ECA) preferably Building Construction Contractor, General Contractor, or Special Contractor for solar/electrical works)
- The bidder shall have **qualified technical personnel**, including at minimum: **One construction supervisor or engineer, and one licensed electrician or solar technician – CVs of the Key personnel to be provided**

**3. Experience & Technical Capacity**

- **Company profile** and brief description of experience
- **Evidence of similar completed works such as;** building construction (small utility buildings, offices, stores, etc.) and Solar-powered lighting or off-grid solar systems, for each Project completed the following details should be provided:
  - i. Project name and client
  - ii. Contract value
  - iii. Completion date
  - iv. Completion certificate or reference letter

**4. Financial Capacity**

- Recent bank statement or bank reference letter (**Bank statement for the last 6 month**)
- Audited financial statements for the last two year (if available)

**b) Compliance:**

- The bidder shall comply with **Ethiopian laws and regulations**, SND Ethiopia procurement rules, and donor (**TdH Netherlands / EJR Project**) requirements.
- The bidder shall not be under **suspension or debarment** by any government or donor organization.

**c) Bid Submission:**

- Bids must be submitted online to procurement email: **procurement@sndafrica.org** or **Hard copies to be brought at SND-Ethiopia Dubluk Office**. Referenced : **SND- EJR Project-Dublik /2026 – 001** as the subject of the Email or on the ENVELOPE
  - Bids must be submitted in **Ethiopian Birr (ETB)** only.
  - Modifications to item descriptions or quantities are strictly prohibited and will lead to disqualification.
  - All fields in the proforma must be correctly filled.
  - Late submissions will not be accepted.

**d) Bid Opening:**

The submitted bids will be opened in the presence of bidders or their authorized representatives at:  
**SND-Ethiopia, Borana Zone, Dubluk SND-Field Office**  
**Date:** Wednesday, 21<sup>st</sup> January, 2026  
**Time:** 10:00AM

**f) Evaluation Process:**

The evaluation will be conducted in **two stages**:

***A. Technical Evaluation (Refer to the Eligibility criteria provided above) (a) - Total Score 70%***

Bidders will be assessed on:

- Compliance with Legal & Administrative Documents ( 20 Marks)
- Compliance with Construction & Professional Certification including; Contractor Registration Certificate from the Ethiopian Construction Authority (ECA) and CVs of the Key personnel ( 20 Marks)
- Proof of relevant Experience & Technical Capacity ( at least 1 proof of similar work completed in building construction work and another one in Solar-powered lighting or off-grid solar systems) –(20 Marks)



- Proof of the Company/ Bidder financial capacity which will be verified from the audited report or the bank statement for the last 6 month (10 Marks)

Only bidders who achieve the **minimum technical pass mark of 50%** will qualify for the next stage.

**B. Financial Evaluation - Total Score 30%**

- Financial evaluation shall be conducted **only for technically qualified bidders**.
- The **lowest-priced quotation** shall receive the **maximum score of 30%**.
- Other bidders shall be scored using the following formula:

$$\text{Financial Score} = (\text{Lowest Quoted Price} / \text{Bidder's Price}) \times 30$$

**Award Decision:** The contract will be awarded to the **technically compliant bidder with the most advantageous financial offer**.

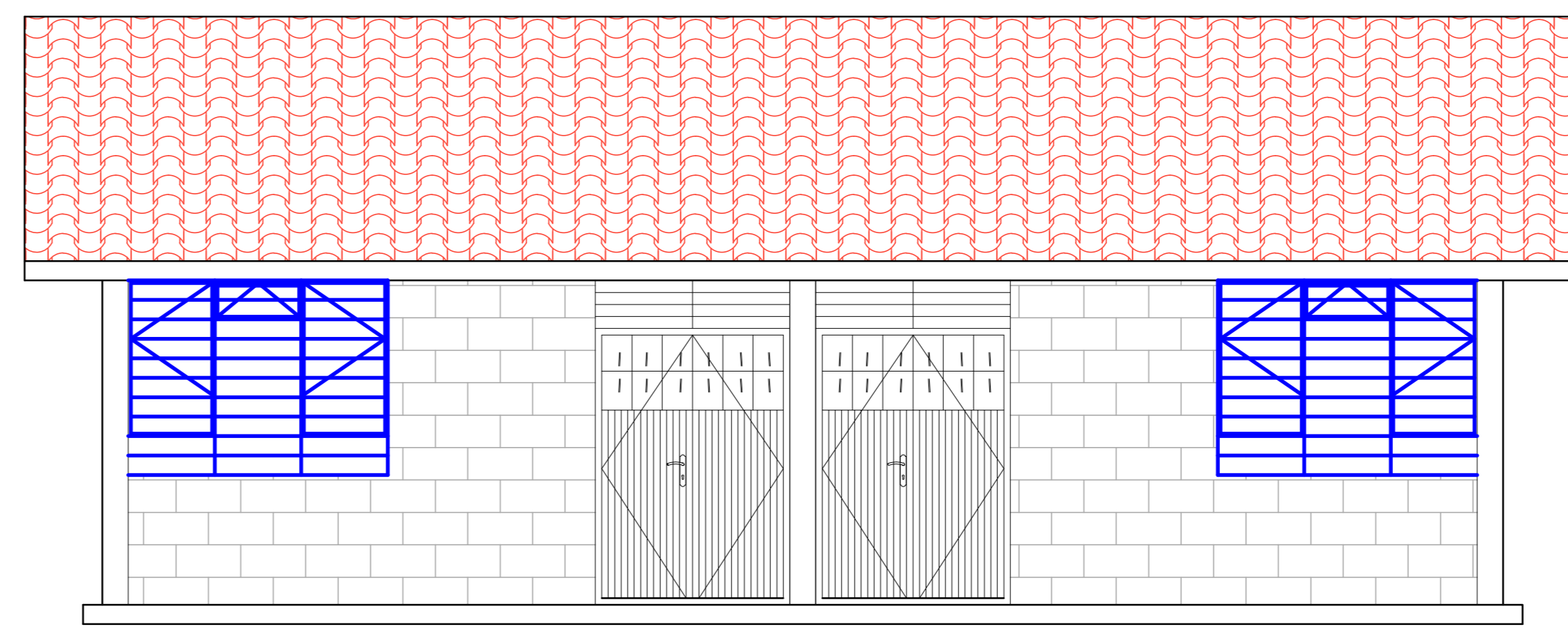
**e) Additional Notes**

- Site visits and pre-bid clarification meetings can be arranged upon request.
- SND-Ethiopia reserves the right to accept or reject any or all bids, fully or partially, seek for additional documents/ clarifications without providing justification.

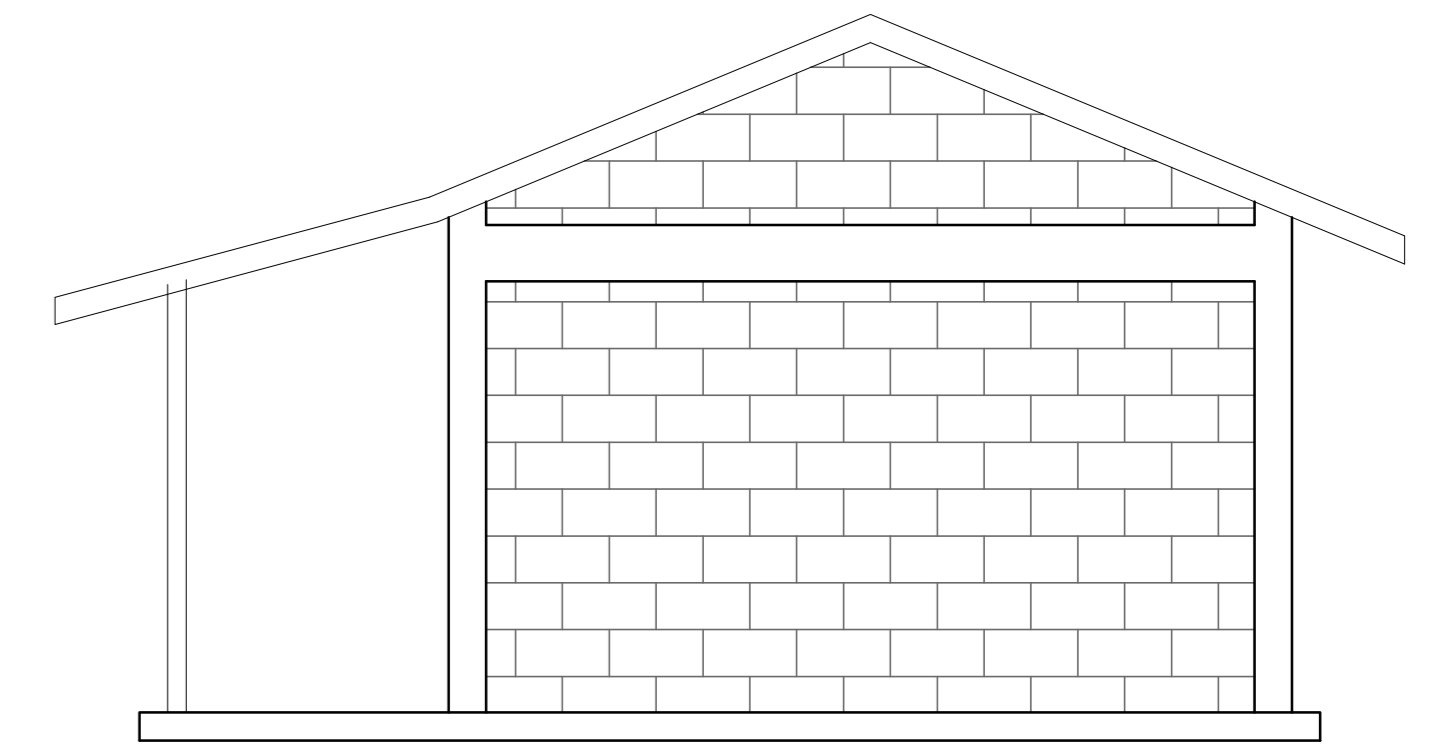
**For SND Official Use Only**

No.	Name of staff	Designation	Date	Signature
1				
2				
3				
4				
5				

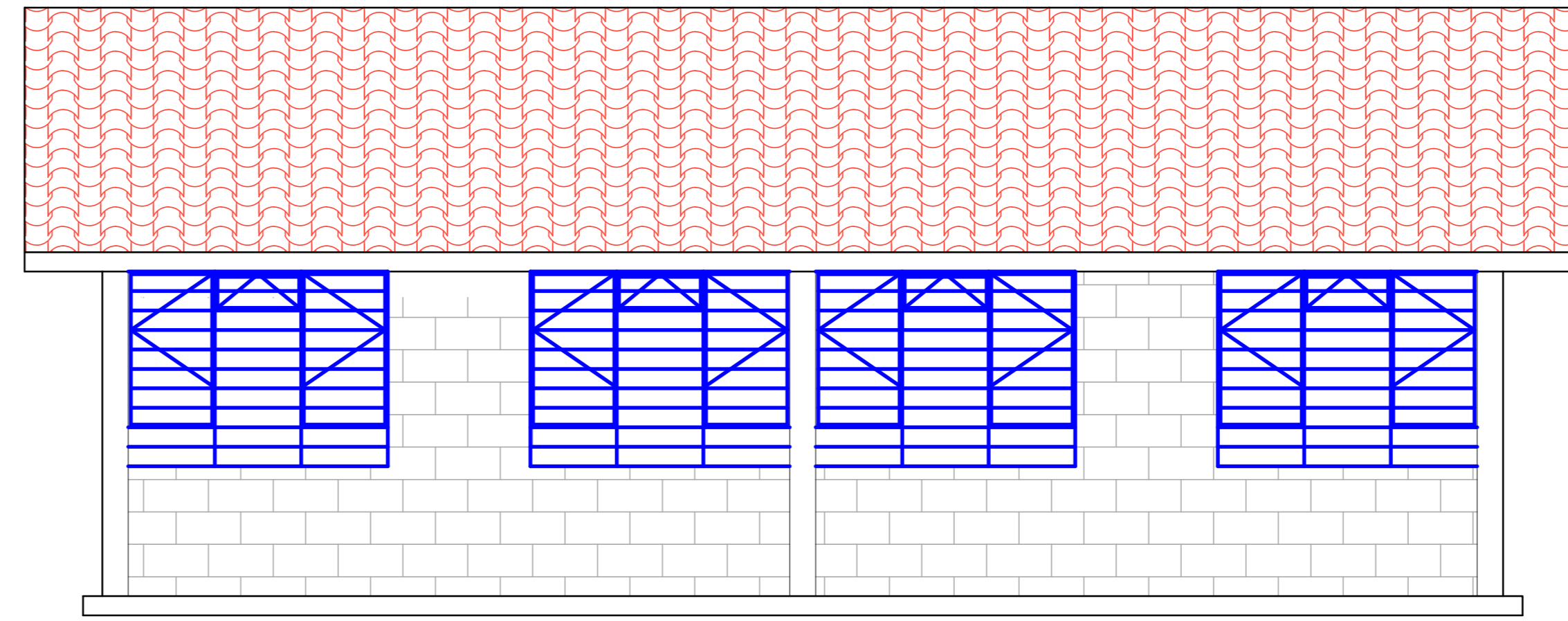
**NB** Quotation to be filled as per the specification given and to be submitted on or before **23<sup>rd</sup> February 2026** via [procurement@sndafrica.org](mailto:procurement@sndafrica.org) or to be delivered to **SND offices in Dubluk**  
**NB 2 :** The Tender Document should be referenced: **SND- EJR Project-Dublik /2026-001**  
as the subject of the Email or on the ENVELOPE



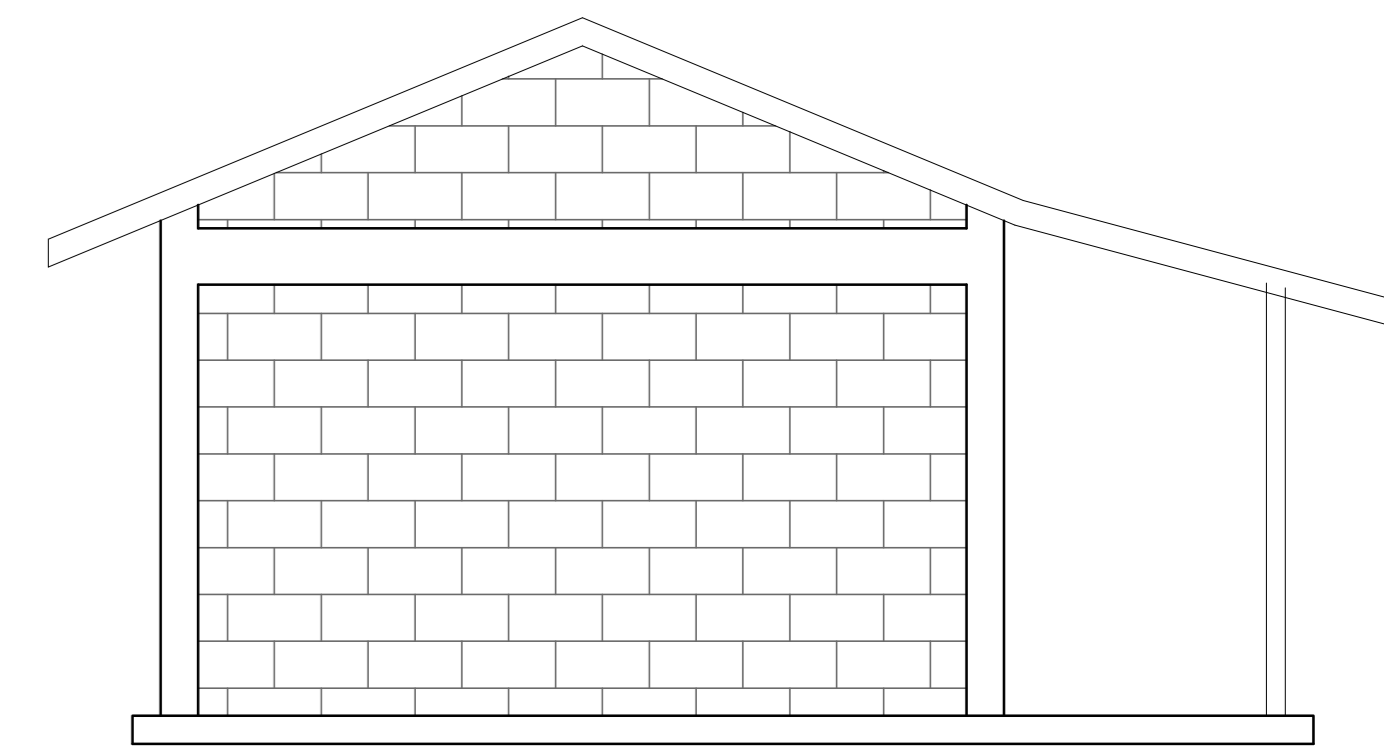
**ELEVATION 01**



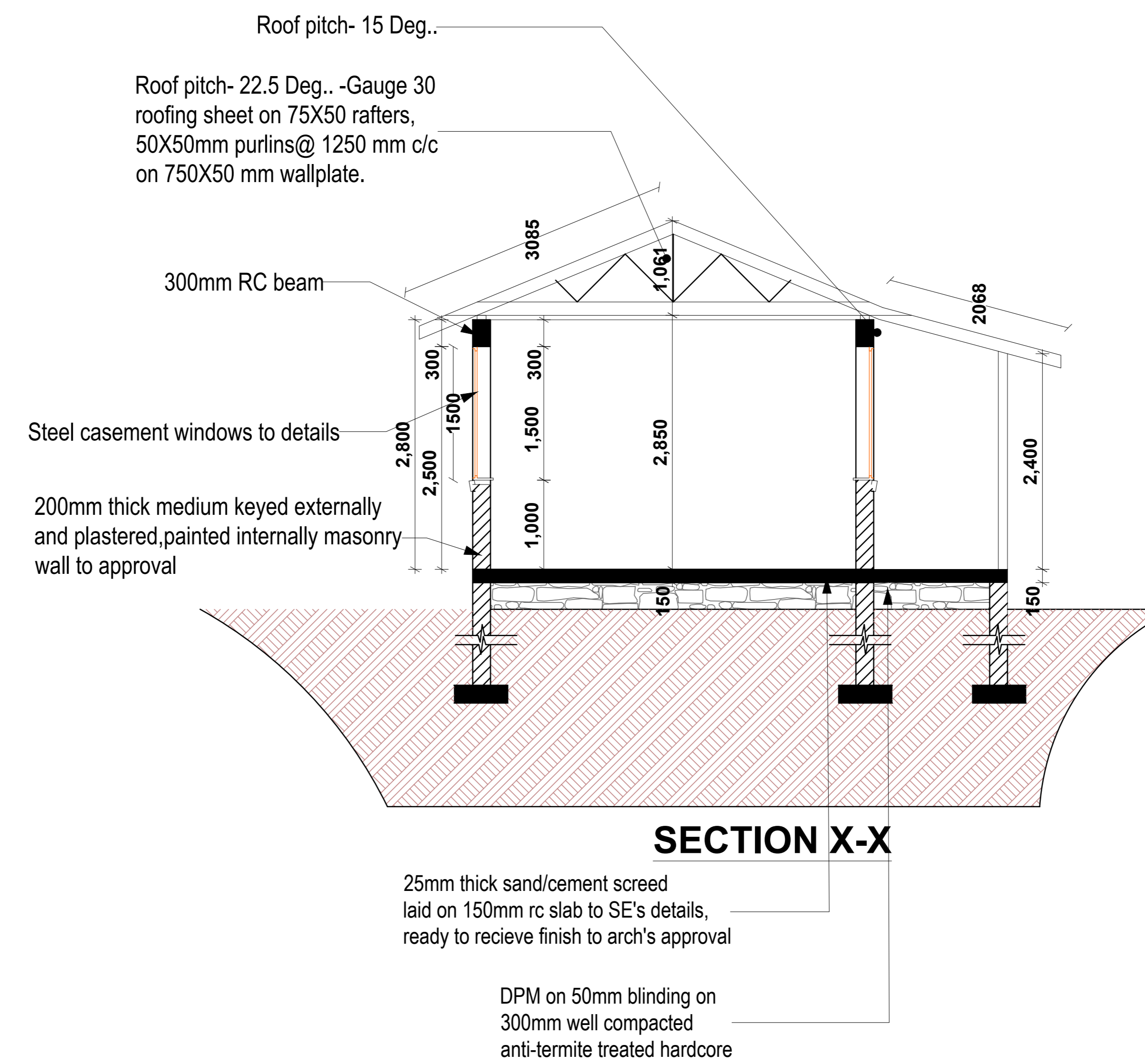
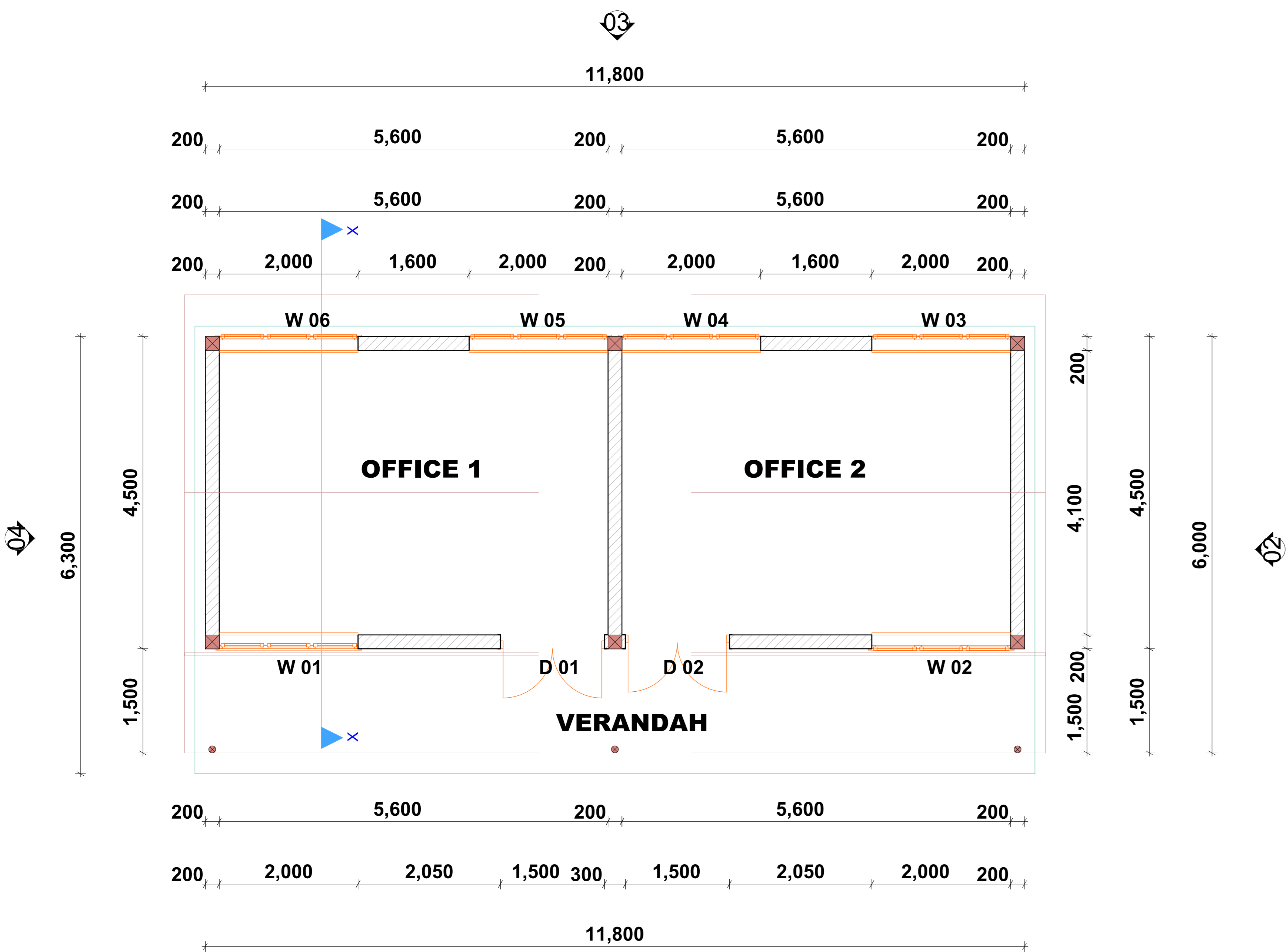
**ELEVATION 02**



**ELEVATION 03**



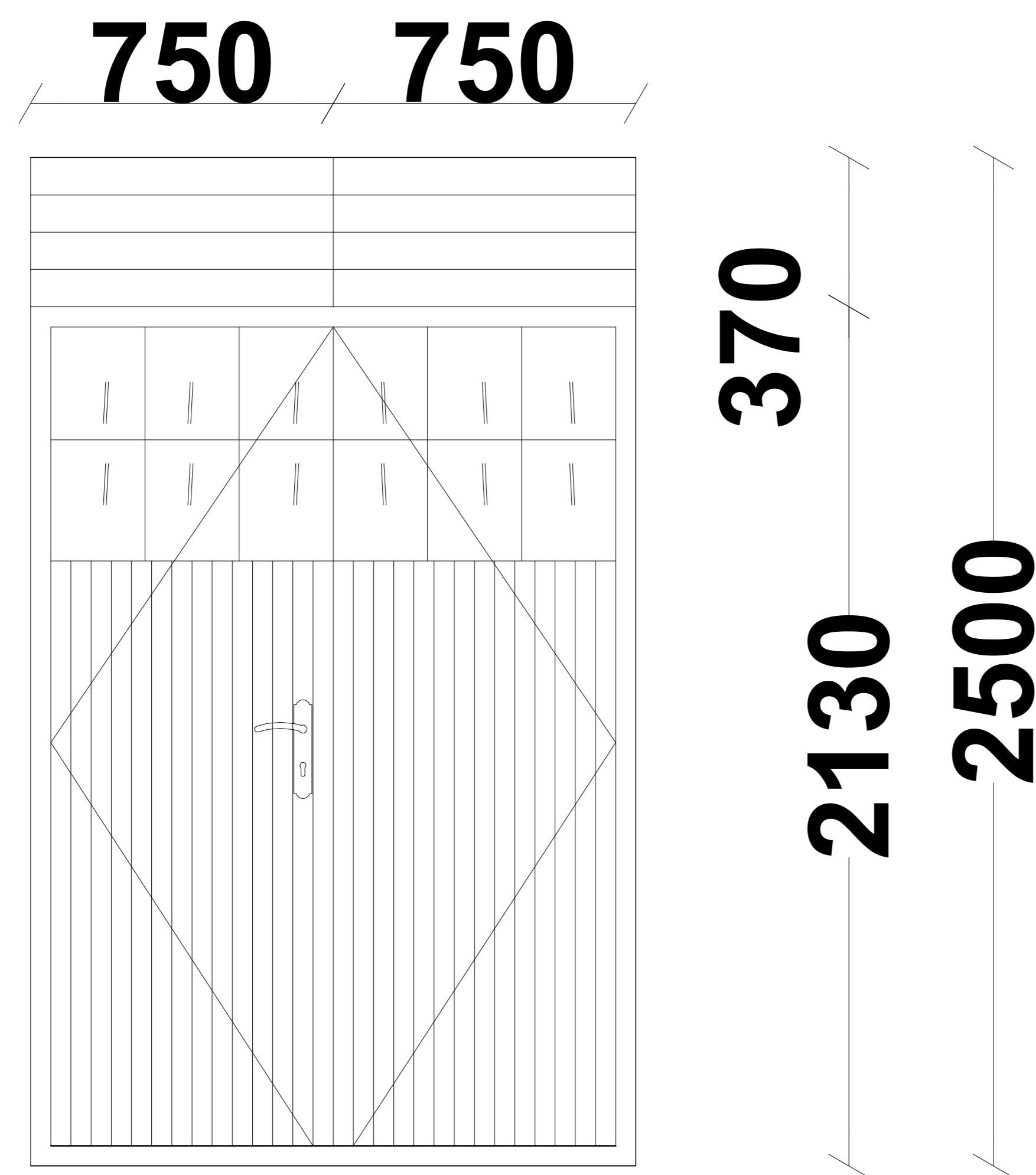
**ELEVATION 04**



CONSULTANT	REV NO.	DESCRIPTION	DATE	CLIENT	PROJECT DETAILS		Date:	Job No:		
					PROJECT TITLE:		Designed:			
						DRAWING TITLE:		Drawn:	Cad File Name	
								Checked:		
								Approved:	DWG. No.	Rev. No.
							Scale:			

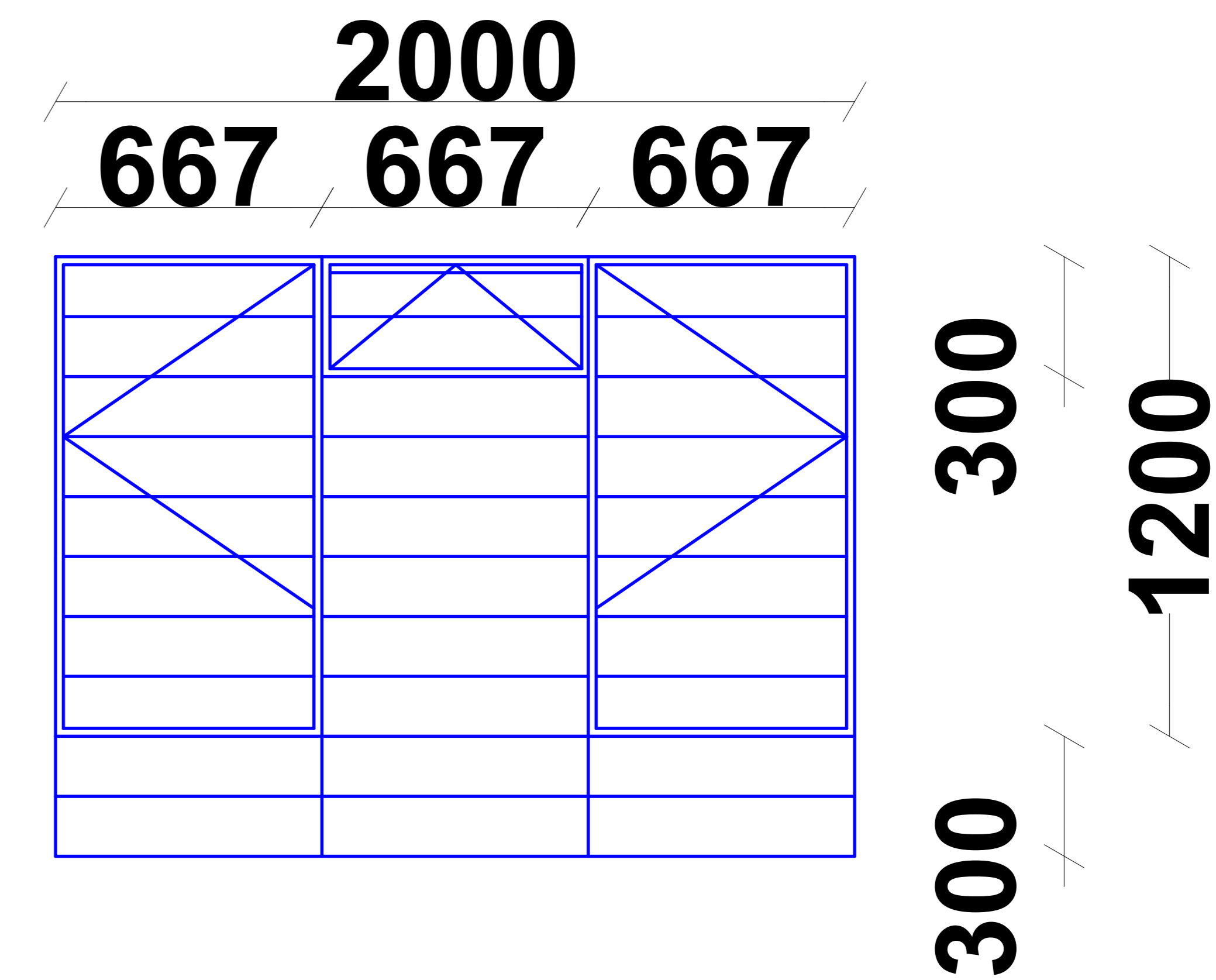
# DOOR SCHEDULE

NUMBER	SIZE(MM)		TYPE
	WIDTH	HEIGHT	
D 01,02	1500	2500	STEEL CASEMENT



# WINDOW SCHEDULE

NUMBER	SIZE(MM)		TYPE
	WIDTH	HEIGHT	
W 01,02,03,04,05,06	2000	1500	STEEL CASEMENT



CONSULTANT	REV NO.	DESCRIPTION	DATE	CLIENT	PROJECT DETAILS		Date:	Job No:
					PROJECT TITLE:		Designed:	
					DRAWING TITLE:		Drawn:	Cad File Name
							Checked:	
							Approved:	DWG. No.
							Scale:	Rev. No.