



## **STRATEGIES FOR NORTHERN DEVELOPMENT (SND) – KENYA**

**TENDER DOCUMENT TO SUPPORT CONSTRUCTION OF A BEEKEEPING  
CENTRE OF EXCELLENCE AT BADASA VILLAGE, JALDESA LOCATION  
MARSABIT COUNTY**

**HARRY THUKU LANE, OFF MARSABIT GENERAL HOSPITAL ROAD, BEHIND  
CATHOLIC CHURCH-MARSABIT**

OFF WILDLIFE ROAD, ADJACENT TO KENYA NATIONAL LIBRARY.

**Tel: [+254] 741845578**

**E-mail: [info@sndafrica.org](mailto:info@sndafrica.org)**

**Website: [www.sndafrica.org](http://www.sndafrica.org)**

**REF: [SND -WFP/ESR-COE BADASA /2025- 001](#)**

***Closing Date: 22<sup>nd</sup> December 2025***



## **TENDER INVITATION**

### **Re: CONSTRUCTION OF A BEEKEEPING CENTRE OF EXCELLENCE AT BADASA VILLAGE**

The Strategies for Northern Development (SND), is a local non-governmental organization working with nomadic pastoralist communities in Northern Kenya and Southern Ethiopia. SND was registered in Kenya with the NGO Coordination Board as a fully-fledged NGO on 6th December 2007.

SND is driven by a vision to see a society where all pastoralist communities are resilient and live a dignified life and a mission to empower and transform pastoralist communities to be self-resilient in life. Key thematic areas of focus are;

- i. Peace, Conflict Resolution and Governance
- ii. Humanitarian Assistance and Emergency Response
- iii. Protection, Gender Equality and Inclusion
- iv. Climate Justice and Resilience
- v. Livelihood and Enterprise Development
- vi. Water, Sanitation, and Hygiene (WASH).
- vii. Institutional Effectiveness

SND through funding from WFP under Ecosystem Community livelihood and infrastructure Project intends to **Support Construction of a Beekeeping Centre of Excellence at Badasa Village, Jaldesa Location Marsabit County**

For this purpose, we hereby, invite bidders to submit quotations for the execution and completion of the above assignments as provided in the tender document.

## **DESCRIPTION OF WORK/SERVICE**

**CONSTRUCTION OF A BEEKEEPING CENTRE OF EXCELLENCE AT BADASA VILLAGE**

**Beekeeping Workshop**

<b>Item No</b>	<b>Description</b>	<b>U.O.M</b>	<b>Qty</b>	<b>Rate</b>	<b>Amount</b>
	<b>Foundation works</b> <i>(Quantities provided are provisional)</i>				
	<b>Excavation</b> <i>Rates to include site clearance, spoil Disposal, maintaining and supporting sides and keeping free from water, mud and fallen materials by bailing, pumping or otherwise</i>				
	Excavation over site depth n.e 0.25mtrs	m <sup>2</sup>	29		
	Excavation for strip foundation to depth n.e 1 mtrs	m <sup>3</sup>	23		
	<b>Concrete works</b> <i>Vibrated reinforced concrete class 20 (1:2:4) with 20mm maximum aggregate as described in:</i>				
	Strip Foundation	m <sup>3</sup>	4		
	<b>Reinforcement</b> <i>(Rates to include cutting, bending, laps allowance and placing on site)</i>				
	A142 BRC Mesh (measured net-no allowance made for laps)	m <sup>2</sup>	23		
	<b>Masonry Walling</b> <i>(Foundation quarry stone walling in cement and sand (1:3) mortar reinforced with and including 25 x 3mm thick hoop iron in every alternate course.)</i>				
	200mm for strip foundation	m <sup>2</sup>	39		
	<b>Floor Slab</b>				
	<b>Filling</b>				
	<i>Filling to completed structures including compaction as specified</i>				
	300 mm thick approved hardcore filling spread, well rammed and compacted in 150mm layers to receive concrete surface bed	m <sup>3</sup>	12		

	50mm thick approved murrum to hardcore surface	m <sup>2</sup>	40		
	<b>Water proofing</b>				
	Single layer of 1000 gauge polythene sheeting laid on blinded hardcore with 150 mm side laps to receive concrete	m <sup>2</sup>	40		
	<b>Reinforcement</b>				
	A142 BRC Mesh (measured net-no allowance made for laps)	m <sup>2</sup>	40		
	<b>Form Work</b> <i>(Provide and fix shuttering including propping, strutting and striking all as specified)</i>				
	sawn form work fair finish to:				
	Formwork to edges of floor slab girth not exceeding 200mm	m	27		
	<b>Concrete</b> <i>(Vibrated reinforced concrete class 20 (1:2:4) with 20mm maximum aggregate as described in)</i>				
	150mm floor slab	m <sup>3</sup>	6		
	<b>Subtotal 1</b>				-
	<b>Super Structure</b>				
	<b>Masonry Walling</b> <i>(Dressed masonry walling in cement and sand (1:3) mortar reinforced with and including 25 x 3mm thick hoop iron in every alternate course.)</i>				
	200mm Masonry walling	m <sup>2</sup>	11		
	Gauge 28 IT5 Prepainted Box profile for walling	m <sup>2</sup>	36		
	<b>Square Hollow sections</b> <i>(Rates to include cutting, welding, laps allowance and placing on site)</i>				

	Prepainted 40mm x 20mm x 1.5mm SHS framing for super structure (struts, joists, sills, topplates, corner posts and headers)	m	130		
	<b>Roofing Works</b>				
	<b>Steel works</b> <i>(Rates to include for delivery, cuttings, welding, fastening with hoop iron and joinery)</i>				
	Allow for supply fabrication and installation of 40mm x 20mm x 2mm SHS roofing trusses at 1500mm spacing C-C as detailed	nr	5		
	Supply and installation of 30mm x 20mm x 1.5mm purlins @ 1250mm spacing C-C	mtrs	40		
	25mm x 25mm x 1.5mm roof parapet Frame work as specified	sum	1		
	<b>Cladding</b>				
	Gauge 28 box profile sheets (blue painted)	m <sup>2</sup>	55		
	Gauge 28 box profile for parapet walling	m <sup>2</sup>	27		
	150mm PVC gutters <i>Heavy duty UPVC rainwater gutters &amp; down pipes and fittings : solvent welded and jointing in approved adhesive built into concrete or fixed with approved holder brackets: to Architects approval (provisional)</i>	mtrs	9.9		
	<b>Finishes</b>				
	<b>Wall finishes</b> <i>15mm plaster: Cement and sand mortar (1:2) as described to:</i>				
	Interior wall surfaces	m <sup>2</sup>	12		
	<b>Sub total 2</b>				-
	<b>Floor Finishes</b> cement sand screed as described in:				

	32mm thick screed with a steel finish finished smooth with red oxide	m <sup>2</sup>	24		
	<b>Doors &amp; Windows</b>				
	<b>Windows</b> <i>Supply and Fix the following purpose made steel casement windows manufactured from heavy duty standard sections primed with three coats of super gloss paint and fixing to masonry or concrete head and jamb complete with closing mechanism and other fittings.</i>				
	Window size 2100 x 1500 mm windows with 4mm glazing	nr	3		
	Window size 1200 x 1500 mm windows with 4mm glazing	nr	3		
	<b>Doors</b> <i>Standard section purpose made heavy duty steel casement doors in modular panes complete with frame, sub-frame, mullions, transoms, glazing bars, burglar proofing bars horizontally and vertically in all openable panes, all necessary pegs, polished brass handles and stays, pin type heavy duty hinges, mosquito proofed hooded permanent vent, fixing lugs cast on, three coats of super gloss paint before fixing in position and pointing with approved mastic sealant all round frame</i>				
	Double leaf Door size 1500 x 2400mm with 4mm glazing	nr	1		
	Double leaf Door size 900 x 2400mm with 4mm glazing	nr	2		
	<b>Builders works related to services installations</b>				
	Provide for all the necessary builders works in connection with all the electrical services installation works (cabling, Trunking, pattresses and fittings)	Sum	1		
	<b>Subtotal 3</b>				-
	<b>Collection page</b>				-
	<b>Sub Total 1 Brought Forward</b>				-

					-
	<b>Sub Total 2 Brought Forward</b>				-
	<b>Sub Total 3 Brought Forward</b>				-
	<b>Grand Total</b>				-

**Quality Control room**

<b>Item No</b>	<b>Description</b>	<b>U.O.M</b>	<b>Qty</b>	<b>Rate</b>	<b>Amount</b>
	<b>Foundation works</b> <i>(Quantities provided are provisional)</i>				
	<b>Excavation</b> <i>Rates to include site clearance, spoil Disposal, maintaining and supporting sides and keeping free from water, mud and fallen materials by bailing, pumping or otherwise</i>				
	Excavation over site depth n.e 0.25mtrs	m <sup>2</sup>	25		
	Excavation for strip foundation to depth n.e 1 mtrs	m <sup>3</sup>	23		
	<b>Concrete works</b> <i>Vibrated reinforced concrete class 20 (1:2:4) with 20mm maximum aggregate as described in:</i>				
	Strip Foundation	m <sup>3</sup>	3		
	<b>Reinforcement</b> <i>(Rates to include cutting, bending, laps allowance and placing on site)</i>				
	A142 BRC Mesh (measured net-no allowance made for laps)	m <sup>2</sup>	17		
	<b>Masonry Walling</b> <i>(Foundation quarry stone walling in cement and sand (1:3) mortar reinforced with and including 25 x 3mm thick hoop iron in every alternate course.)</i>				
	200mm for strip foundation	m <sup>2</sup>	28		
	<b>Floor Slab</b>				
	<b>Filling</b> <i>Filling to completed structures including compaction as specified.</i>				
	300 mm thick approved hardcore filling spread, well rammed and compacted in 150mm layers to receive concrete surface bed	m <sup>3</sup>	10		

	50mm thick approved murrum to hardcore surface	m <sup>2</sup>	33		
	<b>Water proofing</b>				
	Single layer of 1000 gauge polythene sheeting laid on blinded hardcore with 150 mm side laps to receive concrete	m <sup>2</sup>	33		
	<b>Reinforcement</b>				
	A142 BRC Mesh (measured net-no allowance made for laps)	m <sup>2</sup>	33		
	<b>Form Work</b> (Provide and fix shuttering including propping, strutting and striking all as specified)				
	sawn form work fair finish to:				
	Formwork to edges of floor slab girth not exceeding 200mm	m	23		
	<b>Concrete</b> (Vibrated reinforced concrete class 20 (1:2:4) with 20mm maximum aggregate as described in)				
	150mm floor slab	m <sup>3</sup>	5		
	<b>Subtotal 1</b>				-
	<b>Super Structure</b>				
	<b>Masonry Walling</b> (Dressed masonry walling in cement and sand (1:3) mortar reinforced with and including 25 x 3mm thick hoop iron in every alternate course.)				
	200mm Masonry walling	m <sup>2</sup>	10		
	Gauge 28 IT5 Prepainted Box profile for walling	m <sup>2</sup>	36		
	<b>Square Hollow sections</b> (Rates to include cutting, welding, laps allowance and placing on site)				
	Prepainted 40mm x 20mm x 1.5mm SHS framing for super structure (struts, joists, sills, topplates, corner posts and headers)	m	100		
	<b>Roofing Works</b>				
	<b>Steel works</b> (Rates to include for delivery, cuttings, welding, fastening with hoop iron and joinery)				
	Allow for supply fabrication and installation of 40mm x 20mm x 2mm SHS roofing trusses at 1500mm spacing C-C as detailed	nr	5		
	Supply and installation of 30mm x 20mm x 1.5mm purlins @ 1250mm spacing C-C	mtrs	30		
	25mm x 25mm x 1.5mm roof parapet Frame work as specified	sum	1		
	<b>Cladding</b>				
	Gauge 28 box profile sheets(blue painted)	m <sup>2</sup>	42		
	Gauge 28 box profile for parapet walling	m <sup>2</sup>	22		
	150mm PVC gutters Heavy duty UPVC rainwater gutters & down pipes and fittings : solvent welded and jointing in approved adhesive built into concrete or fixed with approved holder brackets: to Architects approval(provisional)	mtrs	9.9		
	<b>Finishes</b>				

	<b>Wall finishes</b> <i>15mm plaster: Cement and sand mortar (1:2) as described to:</i>				
	Interior wall surfaces	m <sup>2</sup>	12		
	<b>Subtotal 2</b>				-
	<b>Floor Finishes</b> cement sand screed as described in:				
	32mm thick screed with a steel finish finished smooth with red oxide	m <sup>2</sup>	19		
	<b>Tilling</b>				
	Supply and fix 400mm x 400mm x 4mm ceramic floor tiles properly aligned and finished with recommended grout	m <sup>2</sup>	20		
	<b>Doors &amp; Windows</b>				
	<b>Windows</b> <i>Supply and Fix the following purpose made steel casement windows manufactured from heavy duty standard sections primed with three coats of super gloss paint and fixing to masonry or concrete head and jamb complete with closing mechanism and other fittings.</i>				
	Window size 1800 x 1500 mm windows with 4mm glazing	nr	2		
	Window size 2100 x 1500 mm windows with 4mm glazing	nr	2		
	<b>Doors</b> <i>Standard section purpose made heavy duty steel casement doors in modular panes complete with frame, sub-frame, mullions, transomes, glazing bars, burglar proofing bars horizontally and vertically in all openable panes, all necessary pegs, polished brass handles and stays, pin type heavy duty hinges, mosquito proofed hooded permanent vent, fixing lugs cast on, three coats od super gloss paint before fixing in position and pointing with approved mastic sealant all round frame</i>				
	Double leaf Door size 1500 x 2400mm with 4mm glazing	nr	1		
	Double leaf Door size 900 x 2400mm with 4mm glazing	nr	1		
	<b>Builders works related to services installations</b>				
	Provide for all the necessary builders works in connection with all the electrical services installation works (cabling, Trunking, pattresses and fittings)	Sum	1		
	<b>Subtotal 3</b>				-
	<b>Collection page</b>				-
	<b>Sub Total 1 Brought Forward</b>				-
	<b>Sub Total 2 Brought Forward</b>				-
	<b>Sub Total 3 Brought Forward</b>				-
	<b>Grand Total</b>				-

<b>Processing room</b>					
<b>Item No</b>	<b>Description</b>	<b>U.O.M</b>	<b>Qty</b>	<b>Rate</b>	<b>Amount</b>
	<b>Foundation works</b> <i>(Quantities provided are provisional)</i>				
	<b>Excavation</b> <i>Rates to include site clearance, spoil Disposal, maintaining and supporting sides and keeping free from water, mud and fallen materials by bailing, pumping or otherwise</i>				
	Excavation over site depth n.e 0.25mtrs	m <sup>2</sup>	25		
	Excavation for strip foundation to depth n.e 1 mtrs	m <sup>3</sup>	23		
	<b>Concrete works</b> <i>Vibrated reinforced concrete class 20 (1:2:4) with 20mm maximum aggregate as described in:</i>				
	Strip Foundation	m <sup>3</sup>	3		
	<b>Reinforcement</b> <i>(Rates to include cutting, bending, laps allowance and placing on site)</i>				
	A142 BRC Mesh (measured net-no allowance made for laps)	m <sup>2</sup>	17		
	<b>Masonry Walling</b> <i>(Foundation quarry stone walling in cement and sand (1:3) mortar reinforced with and including 25 x 3mm thick hoop iron in every alternate course.)</i>				
	200mm for strip foundation	m <sup>2</sup>	28		
	<b>Floor Slab</b>				
	<b>Filling</b>				
	<i>Filling to completed structures including compaction as specific d.</i>				

	300 mm thick approved hardcore filling spread, well rammed and compacted in 150mm layers to receive concrete surface bed	m <sup>3</sup>	10		
	50mm thick approved murrum to hardcore surface	m <sup>2</sup>	33		
	<b>Water proofing</b>				
	Single layer of 1000 gauge polythene sheeting laid on blinded hardcore with 150 mm side laps to receive concrete	m <sup>2</sup>	33		
	<b>Reinforcement</b>				
	A142 BRC Mesh (measured net-no allowance made for laps)	m <sup>2</sup>	33		
	<b>Form Work</b> <i>(Provide and fix shuttering including propping, strutting and striking all as specified)</i>				
	sawn form work fair finish to:				
	Formwork to edges of floor slab girth not exceeding 200mm	m	23		
	<b>Concrete</b> <i>(Vibrated reinforced concrete class 20 (1:2:4) with 20mm maximum aggregate as described in)</i>				
	150mm floor slab	m <sup>3</sup>	5		
	<b>Subtotal 1</b>				-
	<b>Super Structure</b>				
	<b>Masonry Walling</b> <i>(Dressed masonry walling in cement and sand (1:3) mortar reinforced with and including 25 x 3mm thick hoop iron in every alternate course.)</i>				
	200mm Masonry walling	m <sup>2</sup>	10		

		m <sup>2</sup>	36		
	Gauge 28 IT5 Prepainted Box profile for walling				
	<b>Square Hollow sections</b> <i>(Rates to include cutting, welding, laps allowance and placing on site)</i>				
	Prepainted 40mm x 20mm x 1.5mm SHS framing for super structure (struts, joists, sills, topplates, corner posts and headers)	m	100		
	<b>Roofing Works</b>				
	<b>Steel works</b> <i>(Rates to include for delivery, cuttings, welding, fastening with hoop iron and joinery)</i>				
	Allow for supply fabrication and installation of 40mm x 20mm x 2mm SHS roofing trusses at 1500mm spacing C-C as detailed	nr	5		
	Supply and installation of 30mm x 20mm x 1.5mm purlins @ 1250mm spacing C-C	mtrs	30		
	25mm x 25mm x 1.5mm roof parapet Frame work as specified	sum	1		
	<b>Cladding</b>				
	Gauge 28 box profile sheets (blue painted)	m <sup>2</sup>	42		
	Gauge 28 box profile for parapet walling	m <sup>2</sup>	22		
	150mm PVC gutters <i>Heavy duty UPVC rainwater gutters &amp; down pipes and fittings : solvent welded and jointing in approved adhesive built into concrete or fixed with approved holder brackets: to Architects approval (provisional)</i>	mtrs	9.9		
	<b>Finishes</b>				
	<b>Wall finishes</b> <i>15mm plaster: Cement and sand mortar (1:2) as described to:</i>				
	Interior wall surfaces	m <sup>2</sup>	12		

	<b>Sub total 2</b>				-
	<b>Floor Finishes</b> cement sand screed as described in:				
	32mm thick screed with a steel finish finished smooth with red oxide	m <sup>2</sup>	19		
	<b>Tilling</b>				
	Supply and fix 400mm x 400mm x 4mm ceramic floor tiles properly aligned and finished with recommended grout	m <sup>2</sup>	20		
	<b>Doors &amp; Windows</b>				
	<b>Windows</b> <i>Supply and Fix the following purpose made steel casement windows manufactured from heavy duty standard sections primed with three coats of super gloss paint and fixing to masonry or concrete head and jamb complete with closing mechanism and other fittings.</i>				
	Window size 1800 x 1500 mm windows with 4mm glazing	nr	2		
	Window size 2100 x 1500 mm windows with 4mm glazing	nr	2		
	<b>Doors</b> <i>Standard section purpose made heavy duty steel casement doors in modular panes complete with frame, sub-frame, mullions, transoms, glazing bars, burglar proofing bars horizontally and vertically in all openable panes, all necessary pegs, polished brass handles and stays, pin type heavy duty hinges, mosquito proofed hooded permanent vent, fixing lugs cast on, three coats of super gloss paint before fixing in position and pointing with approved mastic sealant all round frame</i>				
	Double leaf Door size 1500 x 2400mm with 4mm glazing	nr	1		
	Double leaf Door size 900 x 2400mm with 4mm glazing	nr	1		
	<b>Builders works related to services installations</b>				

	Provide for all the necessary builders works in connection with all the electrical services installation works (cabling, Trunking, pattresses and fittings)	Sum	1		
	<b>Subtotal 3</b>				-
	<b>Collection page</b>				-
	<b>Sub Total 1 Brought Forward</b>				-
	<b>Sub Total 2 Brought Forward</b>				-
	<b>Sub Total 3 Brought Forward</b>				-
	<b>Grand Total</b>				-
	<b>Total cost</b>				-

**All cost should be inclusive of 16% VAT**

**Amount in word**.....

.....

**Company's Name** .....

.....

**Supplier's Name** .....

.....

.....

**Address** .....

**Signature**  
 .....

**GENERAL TERMS AND CONDITIONS**

- 1) **Price:** The prices stated on the order shall be held firm for the period and / or quantity unless specifically stated otherwise
- 2) **Source of Instructions:** The Supplier shall not seek nor accept instructions from any source external to SND in relation to the performance of the contract.
- 3) **Assignment:** The Supplier shall not assign, transfer, sublet or subcontract the contract or any part thereof without the prior written consent of the Buyer.
- 4) **Corruption:** The Supplier shall not give, nor offer to give, anyone employed by the Buyer an inducement or gift that could be perceived by others to be a bribe. The Supplier agrees that a breach of this provision may lead to an immediate end to business relationships and termination of existing contracts.
- 5) **Confidentiality:** All data, including but not limited to, maps, drawings, photographs, estimates, plans, reports and budgets that has been compiled by or received by the Supplier under the contract shall be the property of SND and shall be treated as confidential. All such data should be delivered to the authorized officials representing the Buyer upon request.
  - a. The Supplier may not communicate at any time to any other person, government or authority external to SND, any information that has been compiled through association with SND which has not been made public except with written authorization from the Buyer. These obligations do not lapse upon termination of the contract.
- 6) **Use of Emblem or Name:** Unless otherwise agreed in writing; the Supplier shall not advertise nor make public the fact that it is supplying goods or services to the Buyer, nor shall the Supplier in any way whatsoever use the name or emblem of SND in connection with its business or otherwise.
- 7) **Observance of Law:** The Supplier shall comply with all laws, ordinances, rules and regulations bearing upon the performance of its obligations under the terms of the contract.
- 8) **Force Majeure:** The meaning of the term can be taken to mean acts of God, war (declared or not), invasion, revolution, insurrection or acts similar in nature or force.
  - a. In the event of and as soon as possible after the occurrence of any cause deemed force majeure, the Supplier must inform the Buyer of the full particulars in writing. If the supplier is rendered unable either in part or in whole to perform its obligations then the Buyer shall take such action as it considers, in its sole discretion, to be appropriate or necessary in the

circumstances.

- b. if the Supplier is permanently rendered incapable in whole or part by reason of force majeure to complete its obligations and responsibilities under the contract then the Buyer will have the right to suspend or terminate the contract on the same terms and conditions laid out in section 9, Cancellation.

9) **Cancellation:** The Buyer reserves the right to cancel the contract should it suspend its activities or through changes to its mandate by virtue of the Executive Council of SND and/or lack of funding. In such a case the Supplier shall be reimbursed by SND for all reasonable costs incurred by the Supplier, including all materials satisfactory delivered and conforming to specification and terms of contract, prior to receipt of the termination notice.

- a. Should the supplier encounter solvency problems including, but not limited to, bankruptcy, liquidation, receivership and similar, the buyer reserves the right to terminate the contract immediately without prejudice to any other right or remedy it may have under the terms of these conditions.

10) **Warranty:** The Supplier shall provide the Buyer with all manufacturers' warranties. The supplier warrants that all goods supplied in relation to the contract meets specification, is defect free and is fit for the purpose of the intended use. If, during the warranty period, the goods are found to be defective or non- conforming to specification, the Supplier shall promptly rectify the defect. If the defect is permanent then at the choice of the Buyer the Supplier will either replace the item at their cost or reimburse the Buyer.

11) **Inspection and Test:** The Supplier must inspect the goods prior to dispatch to ensure conformance to specification and/or any other provisions of the contract. The Buyer reserves the right to inspect the goods for compliance with specifications and provisions of the contract. If, in the Buyers' opinion, the goods and/or services do not comply with the specification, the Buyer will

inform the Supplier in writing. In such a case the Supplier shall take the necessary action to ensure compliance, liability for any additional cost incurred for rectifying compliance will rest with the Supplier.

12) **Changes:** The Buyer reserves the right to make reasonable changes at any time to the specification, drawings, plans, quantity, packing instructions, destination, or delivery instruction. If any such change affects the price of goods or performance of service the Supplier and Buyer may negotiate an equitable adjustment to the contract, provided that the Supplier claims for adjustments in writing to the Buyer within 30 days from being notified of any change.

13) **Export License:** If export licenses are required for the goods, the Supplier is responsible for obtaining that license.

14) **Payment Terms:** Unless otherwise agreed, payment terms will be net 30 days from receipt of a correctly prepared invoice.

**ESSENTIAL REQUIRED DOCUMENTS**

The tenderer must attach the following documents to the tender to be submitted:

**1. Mandatory Requirements. (Total Score 30 %)**

- i). Business registration certificate or Certificate of incorporation
- ii). CR12 or Copies of ID card in case of a sole proprietorship & partnership Businesses
- iii). Valid Business permit
- iv). PIN no & KRA Compliance certificate
- v). Duly filled, completed and stamped BOQ

**NB. Only those who provide the mandatory requirement will proceed to technical evaluation**

**2. Technical Documents (Total Score 60 %)**

- i). Certificate of registration with at least NCA 7 and Practicing license (preferably building works)
- ii). Proof of similar assignments completed
- iii). Audited Report for the last 2 years or Bank statement for the last 6Month

**3 Financial evaluation ( Total Score 10%)**

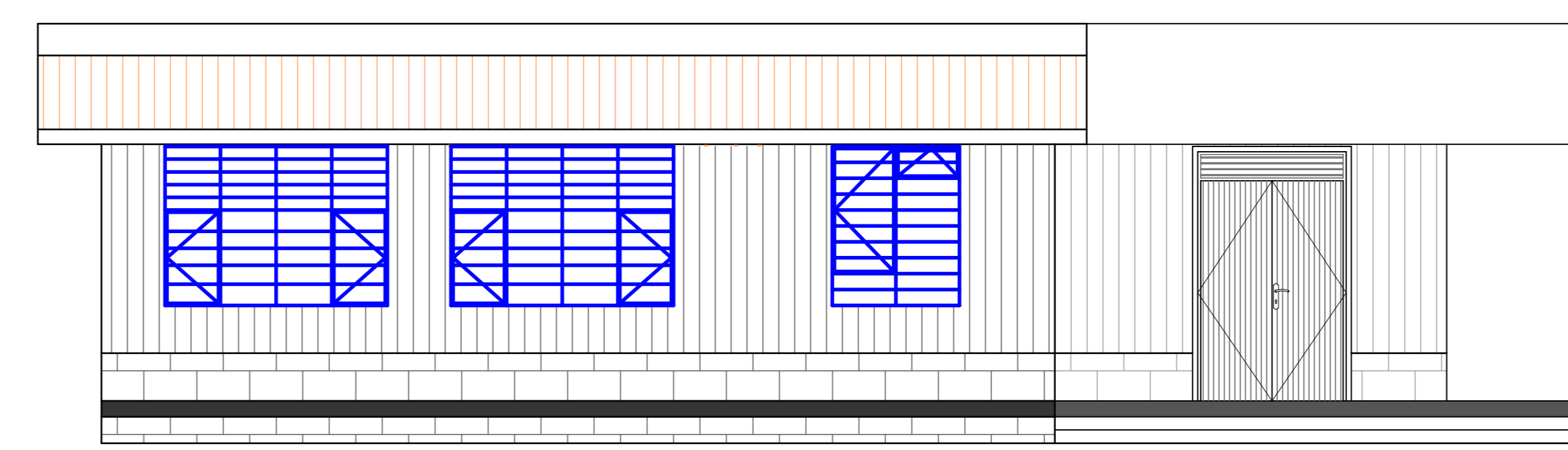
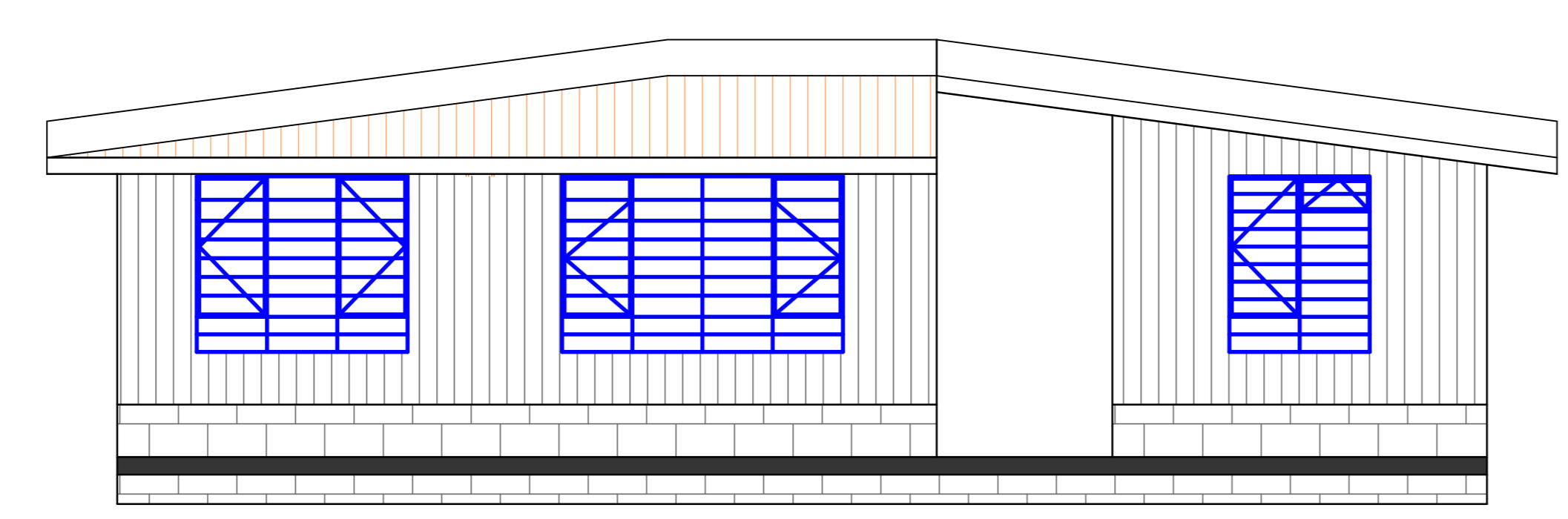
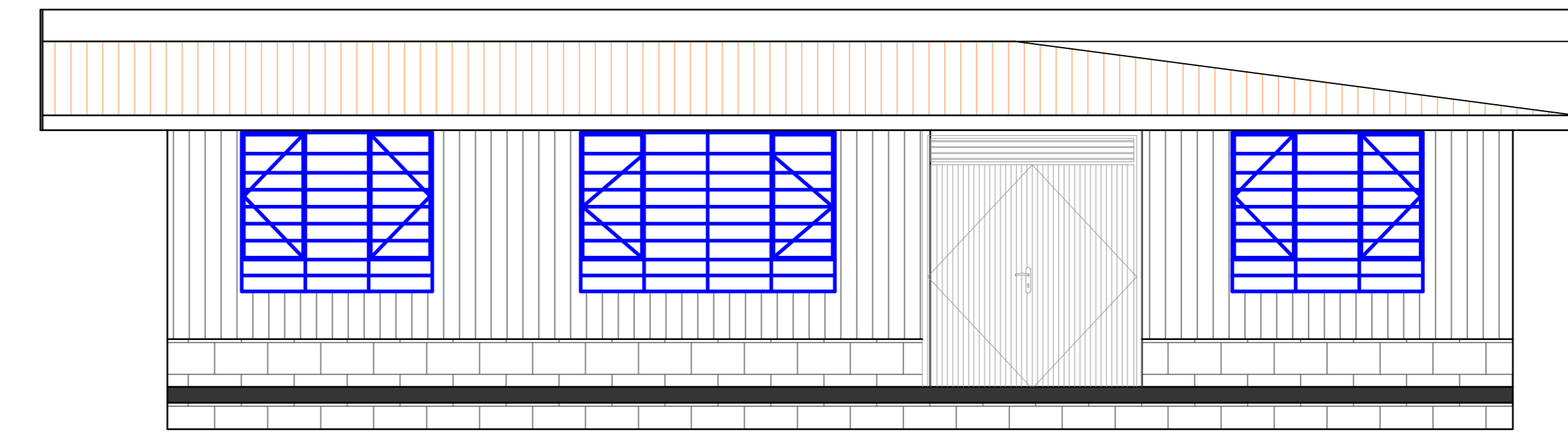
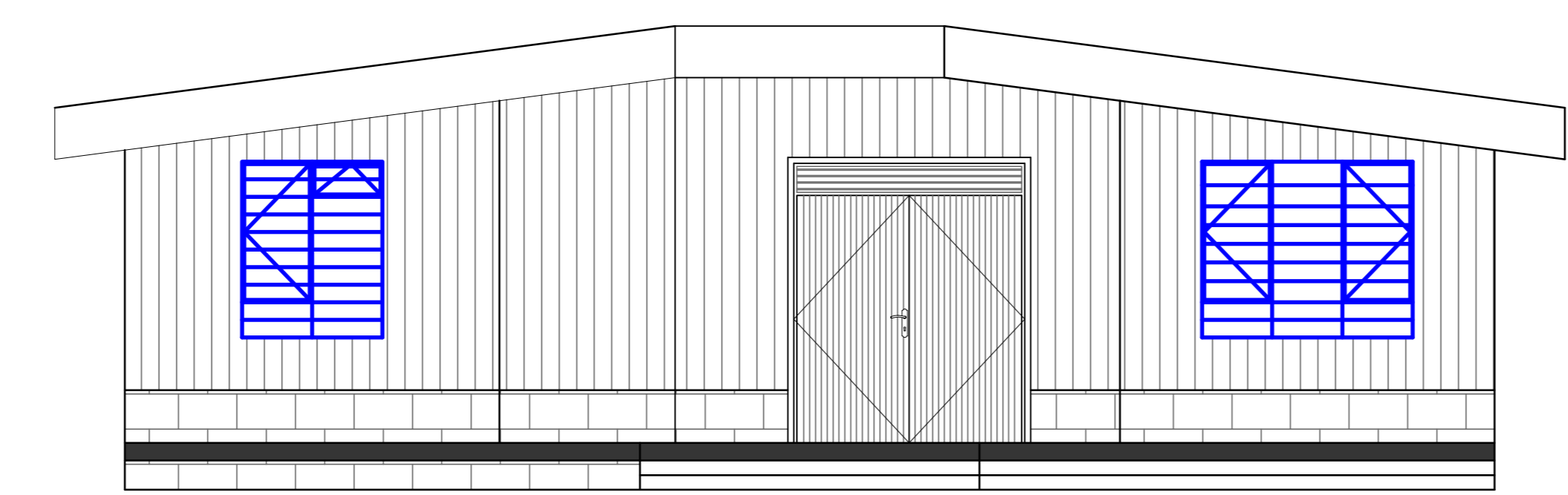
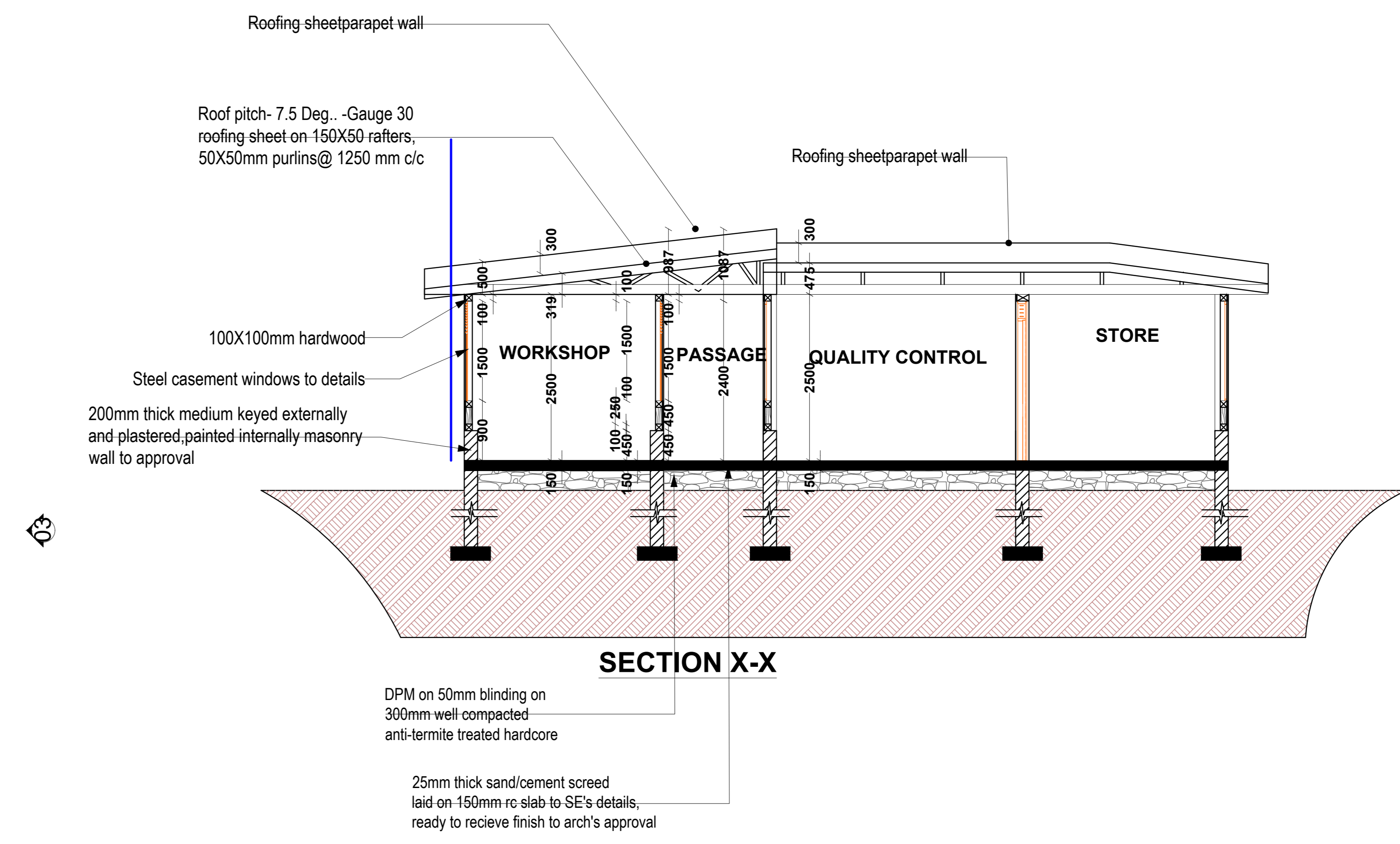
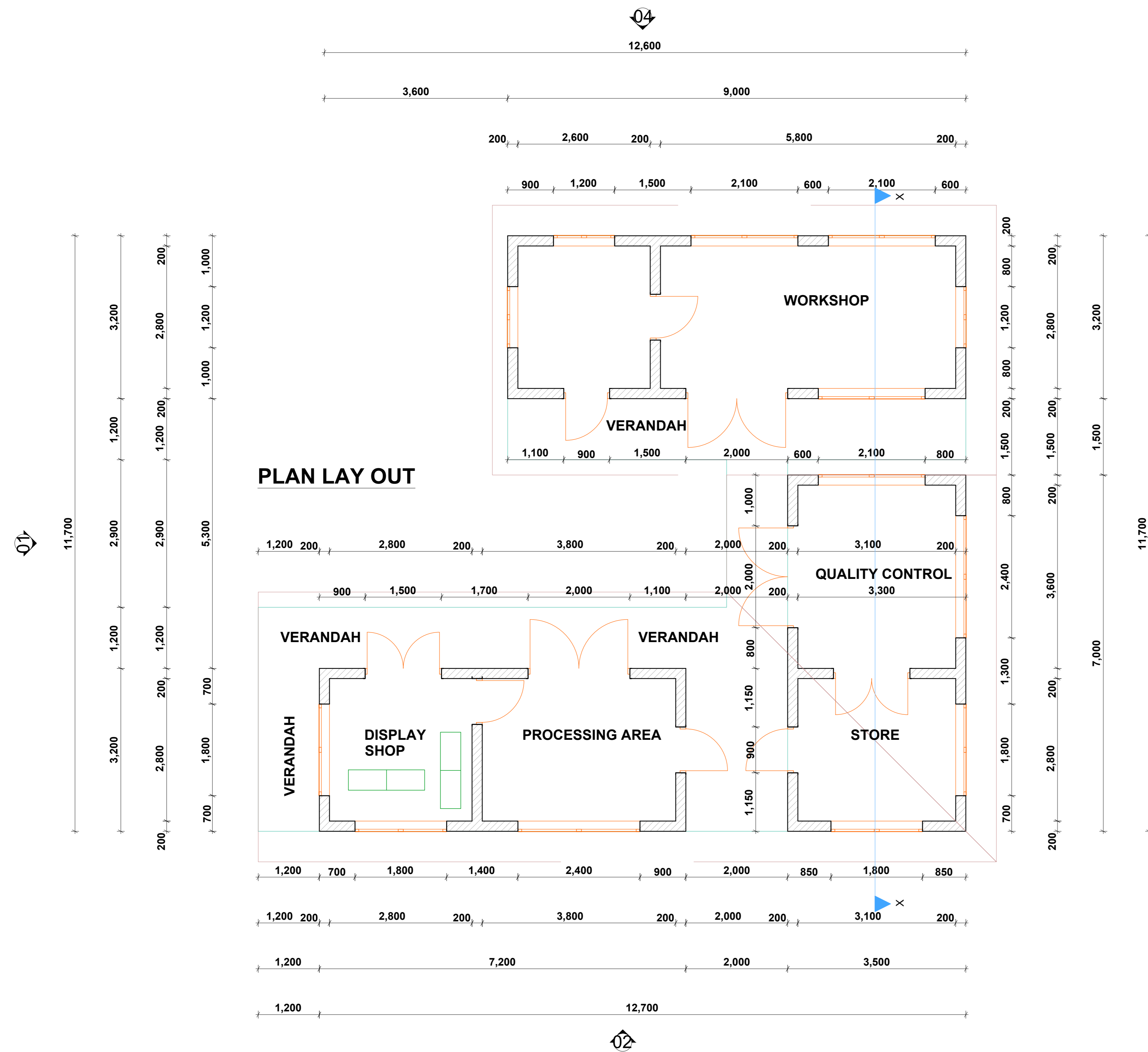
**For Official Use Only**

No.	Name of staff	Designation	Date	Signature
1				
2				
3				
4				
5				

**NB** Quotation to be filled as per the specification given and to be submitted on or before 22<sup>nd</sup> December 2025 via [procurement@sndafrica.org](mailto:procurement@sndafrica.org) or to be delivered to SND offices at [Marsabit or Moyale](#)

**NB 2 :** The RFQ should be referenced **SND -WFP/ESR-COE BADASA /2025- 001** as the subject [of the Email or on the ENVELOPE](#)





CONSULTANT	REV NO.	DESCRIPTION	DATE	CLIENT	PROJECT DETAILS		Date:	Job No:
					PROJECT TITLE:		Designed:	
					DRAWING TITLE:		Drawn:	Cad File Name
							Checked:	
							Approved:	DWG. No.
							Scale:	Rev. No.